

CONGREGATION SHAARE EMETH

BULLETIN

FEBRUARY 2024

FINDING UNITY
IN OUR DIFFERENCES



SEE PAGES 2 & 3 FOR AN IMPORTANT MESSAGE FROM RABBI JIM BENNETT

FINDING UNITY IN OUR DIFFERENCES

By Rabbi James M. Bennett

JBennett@sestl.org

“On October 7, Hamas attacked Israel, and the American Jewish community responded by being angry with each other.”

—Anonymous



This may sound hyperbolic, yet it is not. After a few days of unity, the local and national Jewish community deteriorated into a profoundly polarized, contentious one. When tolerance, patience, compassion, and mutual respect were needed, we instead saw intolerance, impatience, anger, and disrespect rule, mirroring the state of our nation at large.

I have never felt more disunity and mistrust in our Jewish community and nation. Assumptions, loyalty tests, and judgmental prejudices abound, related to one's position on the war between Israel and Hamas, Zionism, antisemitism, party affiliation and loyalty, racism, homophobia, democracy, and more.

This disunity is deeply troubling and un-Jewish. Judaism has always encouraged and nurtured respectful disagreement, if it is “for the sake of Heaven” (ie: for the sake of making the world a better place). Jews have often argued, sometimes quite vociferously, yet throughout our history we have seemingly never forgotten that we need one another and that we are stronger... when our voices are diverse. Lately, this sentiment seems quaint and antiquated.

For me and for many of my fellow clergy here and elsewhere, our recent experience has been an absence of a genuine, pluralistic openness of Jewish life. Many of us experience pressure, feeling attacked from all directions. We are too liberal for our more conservative members and too conservative for our more progressive ones. We are not devoted enough to the Jewish people or Israel if we voice a moral impulse towards humanitarianism and the obligation to care for all innocent people, not merely innocent Jews. We are attacked from the other end of the spectrum by those who claim that devotion to the Jewish people and the State of Israel is immoral, inhumane, and unacceptable, some even suggesting that the Zionist enterprise is inevitably and inextricably colonialist and nationalistic.

The job of clergy is to teach Jewish values... which speak to all of these issues, but doing so feels risky. We cannot make everyone happy and be true to our own values which is exhausting, frustrating and even infuriating.

War, terrorism, racism, hatred, and prejudice are terrible realities. Nonetheless, I choose to remain optimistic and hopeful. I believe that one can be a patriotic American while voicing disagreement with the policies and points of view of our nation and elected officials, and I believe that one can be loyal to the Jewish people and the State of Israel while being critical of the government or policies of Israel, and while voicing a commitment to the moral, ethical, humane treatment of all people, including Palestinians.

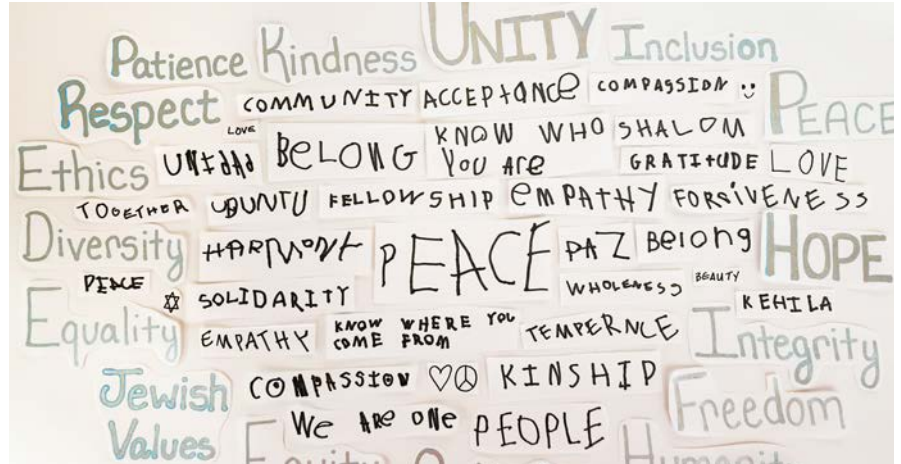
Apparently, some people disagree with me and the other clergy, as exhibited by their emails, letters, and verbal attacks. Some just complain, while some have threatened to leave the congregation, and a few have dramatically done so, some after decades of membership. Initially, a number have claimed that they are leaving because they are looking for a “less political” or “more spiritual” congregation, or one in which there is no “politics” at all, yet they go on to explain that the real reason they are leaving is because they disagree with the positions of the clergy – on Israel, on Palestine, on racism, on American politics. Many claim that they will be finding a congregation that better reflects their values. So, what is it? Do they seek someplace less political, or one that simply reflects their own “non-political” perspective?

To the members of this congregation, and, hopefully, to all the members of the St. Louis Jewish community that might read my words, I invite your respectful disagreement. I have always believed that our congregation is a varied community, one that welcomes and nurtures all opinions, however different, that come from a place of integrity and respect, even if they oppose each other, so long as they are consistent with our Reform Jewish values.

I know that some people who identify as more conservative or more liberal than our clergy have felt silenced or marginalized by our positions at times. I regret this deeply and seek to nurture a community in which all of us, including the clergy and the membership, feel free to share our ideas and to learn from each other, even when we disagree. I encourage all points of view so long as they are presented and shared in a respectful manner. Writing angry emails, making ad-hominem attacks upon our points of view, seeking to marginalize our voices, or leaving the congregation do not accomplish anything. In fact, these make matters worse. A community

in which each congregation is more of an echo-chamber of like-minded, narrow points of view is a weaker community.

I have always cherished the fact that Shaare Emeth is a “big tent” of ideas. I have always been grateful for the “freedom of the pulpit” that enables me and the other clergy to speak our minds, in a spirit of inclusiveness and based on Jewish values as we understand them. I have always appreciated that not every member of Shaare Emeth agrees with us, and that you often respectfully let us know when you do not. I encourage each of you to reach out to us personally, but respectfully, when you disagree. I especially encourage you not to leave the congregation when you disagree, but rather, to share your disagreement and recognize that diversity and respectful dialogue are among the great qualities of Shaare Emeth and are strengths that have made our Congregation great for 157 years.



Thank you to our friends in Shirlee Green Preschool for their help writing these words of unity and peace.

FEBRUARY WORSHIP & TORAH STUDY SCHEDULE

On Friday evenings, Nosh begins at 5:15 p.m. prior to Shabbat services, which take place in the Stiffman Sanctuary, unless otherwise noted.

Friday, February 2, 2024

6 p.m. L'Dor VaDor Intergenerational Kabbalat Shabbat Service + February Birthday Blessings

Saturday, February 3, 2024

9:30 a.m. Torah Study

Friday, February 9, 2024

6 p.m. Kabbalat Shabbat Service: Repro Shabbat With Alicia Jo Rabins, Artist-in-Residence; details on page 6

Saturday, February 10, 2024

9:30 a.m. Torah Study
10:30 a.m. Prayer Lab: Thanks & Praise

Friday, February 16, 2024

6 p.m. Kabbalat Shabbat Service: Jewish Disability Awareness, Acceptance, and Inclusion (JDAIM) Shabbat with special guest artists Rabbi Noah Diamondstein, Eliana Light, & Charlie Kramer

Saturday, February 17, 2024

9 a.m. Shabbat Morning Service: Bar Mitzvah of Zachary Pollock, child of Amy & Jason Pollock
9:30 a.m. Torah Study
11 a.m. Shabbat Morning Service: B'not Mitzvah of Abby & Lily Schreiber, children of Erin & Marc Schreiber

Friday, February 23, 2024

6 p.m. Kabbalat Shabbat Service

Saturday, February 24, 2024

9:30 a.m. Torah Study
11 a.m. Shabbat Morning Service: Bat Mitzvah of Reese Weinhaus, child of Emily & Corey Weinhaus

Friday, March 1, 2024

6 p.m. L'Dor VaDor Intergenerational Kabbalat Shabbat Service + March Birthday Blessings

HOLIDAY BUILDING CLOSURES

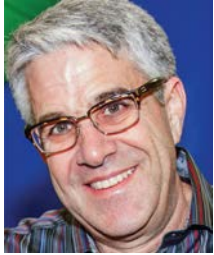
The Congregation Shaare Emeth Office and Shirlee Green Preschool will be closed:

Monday, February 19, 2024 in honor of President's Day.

IT'S NICE TO MEET YOU

By Craig Neuman, Executive Director

CNeuman@sestl.org



It is my distinct honor to join the Congregation Shaare Emeth family as the new Executive Director. For those of you unfamiliar with my bio, I grew up in St. Louis and went to preschool at Shaare Emeth before my family joined the the great westward migration to Chesterfield.

Upon graduating from Parkway Central, I attended the University of Michigan (Hail to the Victors!) where I majored in Psychology. Before I moved to Chicago, I spent three years touring colleges performing with a comedy troupe which I co-founded and then moved to Chicago to become an actor. I then had what I now refer to as my quarter-life crisis and decided to give up acting and devote my energies to Jewish communal service. I worked at the JCC of Chicago for 16 years before returning to Chesterfield and working at the St. Louis JCC for another 16 years. Over the course of those 32 years, I married my wife Amy (Glaser) Neuman and we built a family with two amazing children (Bella, 22, and Leo, 20) and one crazy dog (Lucy, 12).



As I contemplated what to share in this bulletin, the parable of Jacob's ladder comes to mind. As you may know, in Genesis, we learn of Jacob's dream where a ladder descended from heaven and angels traversed up and down. This dream is often used in the Jewish ethical movement known as Mussar, and I feel it's also appropriate to describe my addition to the Shaare Emeth family.

First, just as a ladder has many rungs which a person must use to support themselves, I will be relying upon many people to support me in my role. I will need the support of members, clergy, and staff (and my family) in order to be a successful Executive Director.

Second, a ladder cannot stand unless it is leaning against a high place. Congregation Shaare Emeth is one of the pre-eminent Jewish institutions in St. Louis and, indeed, a leader in the Union for Reform Judaism. The individuals who came before us have raised the Temple to the great heights it has achieved, and I can only hope that I can sustain and raise us even higher.

And finally, if a person encounters difficulties, if they slip back or fall past a broken rung—all is not lost. One must catch hold of the next rung and start moving again. I know that I am going to make mistakes in this capacity—none of us is perfect.

I thank you in advance for giving me the grace to learn from my mistakes and for being there to catch me when I fall.

I look forward to meeting those of you I don't yet know and helping our beloved Temple to continue to reach forever upward.

Introducing Shaare Emeth's Chesed (Caring) Committee Webpage

Where Caring Connects in a Click!

In the spirit of compassion and community, our Congregation has embraced the call to become caring angels, answering Rabbi Goldstein's heartfelt charge on Yom Kippur. We are excited to announce the launch of our new Chesed/Caring Committee webpage, a platform that empowers each of us to extend kindness and support to our fellow congregants.

Whether you are in need of support or eager to lend a helping hand, our new webpage is the central hub for all Chesed-related activities. Here's how you can take part:

I Need Help

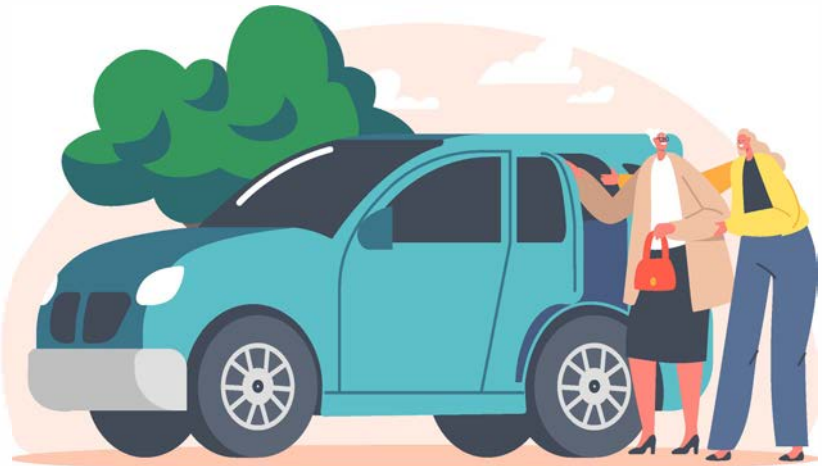
If you or someone you know needs a ride to appointments, services, or a program, our caring volunteers are ready to assist. If you are recovering from illness, have limited mobility, or are adapting to change, we can provide meals right to your doorstep. Our volunteers are ready to provide a friendly visit or call to provide uplifting conversation or combat loneliness.

I Can Help

If you are ready to contribute your time and energy to support others in our community, we invite you to volunteer. Explore the opportunities available, from writing letters to providing rides, and sign up to make a difference.

“There is not one person among us who would not benefit from an extra measure of kindness. There is not one person among us who does not have an extra measure of kindness to share.”

— Rabbi Andrea Goldstein



Check it out at <https://sestl.co/caring>

SPIRITUAL DIRECTION

with Rabbi Andrea Goldstein

Spiritual Direction is a practice that involves meeting with a spiritual director on a monthly basis to cultivate our ability to discern God's presence, the presence of holiness, in all aspects of our lives – the celebrations, the struggles and each moment in between. Anyone can benefit from Spiritual Direction. You do not need to hold any particular image of God, or a belief in God at all. Rabbi Goldstein offers Spiritual Direction most Monday afternoons.

There is no cost for members of Congregation Shaare Emeth, though it is customary to make a donation to the Jewish Mindfulness Center of St. Louis after each session. The cost for non-Shaare Emeth members is \$50 per session.

To set up a first appointment contact Stacy Jespersen at sjespersen@sestl.org.



February Events

FRI

2 LIVING ON A PRAYER

10 A.M. • JEWISH MINDFULNESS CENTER

YOTZER OR: SEEING THE WORLD ANEW

Join Rabbi Goldstein and Lucy Greenbaum in exploring the meaning, history, and development of traditional prayers that can be incorporated or adapted into a personal prayer practice.

Register at jmcstl.org

SUN

4 YOU ARE NOT ALONE

4 P.M. • IN THE KEHILLAH CENTER

A SERVICE OF WHOLENESS, HEALING, AND HOPE

Whether you are facing a physical illness, coping with mental illness, feeling spiritually depleted, living with Alzheimer's or memory loss, caring for someone who is ill, etc. We invite you to join Rabbi Andrea Goldstein and Lucy Greenbaum for an afternoon of music, poetry, prayer, and connection with a community that cares. All are welcome.

Registration is required at jmcstl.org



A WEEKEND WITH ALICIA JO RABINS



Prepare for a weekend of inspiration as acclaimed writer, musician, composer, performer, and Torah teacher Alicia Jo Rabins graces our Congregation and St. Louis community with her transformative presence. Rabins, known for her innovative fusion of words, music, ritual, and performance, will lead a series of events exploring the intersection of ancient wisdom texts, feminism, and everyday life. **Details at sestl.co/aliciajo**

FRI

SAT

SACRED TEXT, POETRY, & SONG:

SUN

9 KABBALAT SHABBAT

5:30 p.m. Nosh • 6 p.m. Service in the Stiffman Sanctuary

10 AN INTERDISCIPLINARY EXPLORATION

9 a.m. Breakfast • 9:30 a.m. Program • At Shaare Emeth

Join Alicia for a unique Torah study and delve into the world of Jewish text through the combined lens of poetry and music.

11 DEEPENING OUR EXPERIENCE OF THE HEBREW SCRIPTURE

9 a.m. The Episcopal Church of the Holy Communion

COMMUNITY-WIDE CONCERT

3 p.m. at The J's Staenberg Family Campus



FRI

16 JDAIM SHABBAT WITH GUEST MUSICIANS

5:30 P.M. NOSH • 6 P.M. SERVICE IN THE STIFFMAN SANCTUARY

JEWISH DISABILITIES AWARENESS, ACCEPTANCE, AND INCLUSION

Join the clergy and Lucy Greenbaum as they welcome Rabbi Noah Diamondstein, Eliana Light, and Charlie Kramer, talented musicians, educators, and thinkers at the forefront of Jewish prayer, spirituality, and connection. **Details at sestl.co/jdaim24**



February Events

TUE

6 TEXTING TUESDAYS

10 A.M. • LIBRARY
CONFERENCE ROOM

HATIKVAH: ISRAEL'S ANTHEM

Explore the national identity and cultural significance of Israel's anthem. Together we will study the meaning of this anthem from its inception to now.



TUE

6 & 13 & 20 & 27

MINDFULNESS MEDITATION SIT

9 A.M. • ZOOM

Join Rabbi Andrea Goldstein for these weekly Mindfulness Meditation sits incorporating teachings and stories from the weekly Torah portions, Jewish prayer, and tradition. No meditation experience is necessary and all are welcome. Get the Zoom link in our Monday emails. **Sign up at sestl.co/jmcemail**



MON

12 SENIOR LUNCH

12 P.M. •
SHAARE EMETH

MAYBE IT'S YOUR MEDICATIONS: WHY WE

NEED TO TALK • With Dr. Hedva Barenholtz Levy, PharmD: PharmD: Join Shaare Emeth, United Hebrew, Temple Israel, and Temple Emanuel for lunch and an important presentation on how to empower yourself to ask key questions regarding your drug therapy.

Email VCundy@sestl.org for details.

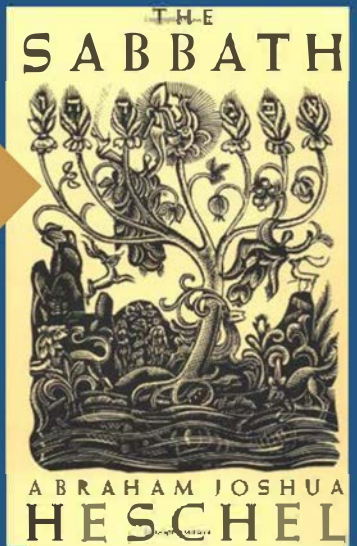
TUE

13 & 20 & 27

TEXTING 10 A.M. • LIBRARY
TUESDAYS CONFERENCE ROOM

THE POWER OF REST IN A NON-STOP WORLD

An Exploration of Abraham Joshua Heschel's 'The Sabbath' With Rabbi Andrea Goldstein • During this three-week course we will read, discuss, and reflect on Rabbi Heschel's 'The Sabbath' and learn how Shabbat can enhance and deepen our connection to the sacred. **Register at sestl.co/jil**



SUN

25 SPIRITUAL PARENTING

9 A.M. • JEWISH
MINDFULNESS CENTER

THE POWER OF REST & PLAY

Join Rabbi Goldstein as we learn, discuss, and share what makes parenting a spiritual practice and how Jewish wisdom can help guide us in our role as parents. The focus of this session will be incorporating the gifts of Shabbat into family life. Free & open to parents with children in grades preK-6. **Registration is required at jmcstl.org**

TUE

27 MATRIARCHS TO MAMALAS

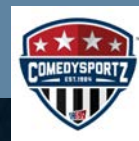
4 P.M. • VIRTUAL (ZOOM)

WOMEN IN POLITICS 2.0

To commemorate the third anniversary of Matriarchs to Mamalas, and in recognition of this presidential election year, we will come together (virtually) this month to discuss Women in Politics 2.0. You will receive a suggested reading list when you register and may read anything you'd like on our topic. **Register at sestl.co/mm0224**



Save the Dates for PURIM WEEKEND 2024



SHUSHAN

AFTER DARK



Saturday, March 23 at 7 p.m.

It's the grown-ups' turn for some rollicking carnival fun! Test out the inflatables and all of the carnival games before the kids get their turn the next day. Enjoy some signature Purim cocktails and mocktails and a hamantaschen dessert bar. At 8 p.m. we'll be treated to an audience-participation improv comedy show with ComedySportz that's part spiel, part Megillah reading, and all hysterical.

ADULT CARNIVAL & COMEDY SHOW



SAVE
THE
DATE

FOR PURIM 2024

SUNDAY, MARCH 24

Join us in the Sanctuary at **10:30 a.m.** for Wonka's Sweet Spiel Spectacular as we tell the story of Purim with a Willy Wonka twist.

Then, watch as Shaare Emeth transforms into a chocolate factory from **11 a.m. – 1 p.m.** during Willy Wonka's Joyful Purim Carnival.

This fun-for-all-ages event will feature a special area of games for our friends ages 5 and younger, and a delicious lunch available for purchase from the amazing Purim Food Committee.

Details & registration for both of these fantastic events are coming soon!

REGISTER FOR CAMP EMETH FOR AN UNFORGETTABLE SUMMER

By Laura Horton

LHorton@sestl.org



Camp information for summer 2024 is now posted on our website at campemeth.org! Take a look and register now, if you haven't already. Camp Emeth is truly a special place to be in the summer, and I

will continue to strive to make Camp Emeth a welcoming "home away from home" for all our campers and counselors as it has been for so many children in our community for over 35 years now.

Camp Emeth offers eight weeks of day camp for children entering Kindergarten through 8th Grade on the grounds of Congregation Shaare Emeth. Some campers join us for all eight weeks, while others pick the weeks that work for them and their summer schedules. Sign up early to secure your spot, as many grades will fill quickly. If your child's grade has filled, be sure to join the waitlist so we can reach out if spots become available.

In addition to Camp Emeth, I've been busy planning fun, inclusive, and memorable events for Shaare Emeth's 3rd-8th graders throughout the year. These youth groups are called SE345, for all current 3rd-5th graders, and SE678 for all current 6th-8th graders. Both youth groups have more events coming up this spring!

Please mark your calendars for the following dates if you'd like to join us and stay tuned for more details and registration links when they become available:

SE345

Saturday, February 24: Ice Skating at Steinberg Ice Rink in Forest Park (evening)

Saturday, March 9: Evening Event TBD

Saturday, April 13: Evening Event TBD

SE678

Sunday, February 25: Snow Tubing at Hidden Valley (afternoon)

Sunday, March 10: Afternoon Event TBD

Sunday, April 14: Afternoon Event TBD

Please reach out with any questions about Camp Emeth or SE345 or SE678 programs! If you'd like to be added to the SE345 and SE678 email lists, send me an email at LHorton@sestl.org.



2024 CAMP DATES & HOURS

June 10 – Aug 2*

Camp runs Mon-Fri from 9 a.m. – 3:30 p.m.

Morning Drop Off begins at 8:45 a.m.

Pre-Care: Drop off as early as 7:30 a.m.

Post-Care: Pick up as late as 6 p.m.

*** There will be no camp on June 12, June 19, or July 4 – these weeks will be prorated to reflect four days of camp.**

WORK AT CAMP EMETH THIS SUMMER!

Entering 9th Grade and want to get some great volunteer experience in a fun camp setting? Apply to be a Counselor-in-Training (CIT) and spend part of your summer learning from our amazing camp staff by working alongside them as part of the Camp Emeth team!

Entering 10th Grade or above and want to help create unforgettable summer memories for kids in our community (and yourself)? Apply to be a part of the Camp Emeth team and learn how working in a summer camp setting like ours can help you grow as a leader and have fun while doing it! We have a variety of positions available, such as camp counselors and specialists, and will do our best to work around your summer schedule. Camp Emeth at its core is centered around our amazing staff which reflect our community.

Caring, creative, diverse, and compassionate are just a few of the words I would use to describe our staff.

Learn more about summer employment opportunities at Camp Emeth at campemeth.org or e-mail LHorton@sestl.org.

Leap into SHAARE EMETH



This leap year gives you an extra day to take advantage of all of the programming we offer at Shaare Emeth. You can see a comprehensive list of the dozens of opportunities around Shaare Emeth on the membership page of our website: sestl.org/membership

We want to see you in our building to engage with you. There is something for everyone to participate in. Whether you are a new member or have been a member for decades, there is an opportunity to connect you with our community.

Your participation in our programming is vital to keeping our Congregation moving forward. It is how our mission is fulfilled. We want to help you get even more connected with our community. This is where you come in.

What interests you?

What do you want to learn more about?

What will deepen your connection to our congregation?

In this early part of the year, please think about where your passion at Shaare Emeth might be. We invite you to look at the myriad opportunities that await you.

Whether you are looking to connect with a particular age group, educate yourself through lifelong, Jewish learning opportunities, act as an agent of social justice, worship and pray, connect with the land of Israel, or help to guide our congregation's future... there is a place for you.

For more information please contact Beth Kodner, bkodner@sestl.org or Emily Cohen, ecohen@sestl.org or call 314-569-0010.

THANK YOU, AV CLUB!

Thank you to our 2024 AV Club! With your generosity, we were able to keep our Shaare Emeth community connected with wrap-around technological services for members of all ages. Whether it was streamed worship services or life cycle events like funerals and B'Mitzvahs, Shaare Emeth was able to include everyone near and far as a connected community.

Please consider becoming a new or renewing AV Club member in 2024.

You can join online through your ShulCloud account or call the main office.

Thanks to our 2024 AV Club members:

Akiva and Brachah Belk
Robert and Gloria Berger
Ronnie and Allen Brockman
Ilene Brooks and Richard Scharnhorst
Frederick and Stefany Brot
Sheila Cohen
Richard and Dianna Fine
Wendy Flusser
Lynne Fogel
Arlene Goodman
Larry and Natalie Goldman
Richard and Sherri Goldman
Randall and Nancy Green
James and Jane Grossman
George and Rita Heymann
Sidney and Nancy Hirsh
Phylis Kahn
Arnold and Sharon Kaufman
Dolores Kling
Jacquelyn and Martin Lipsitz
Ashley and Ann Loiterstein
Gabriel Maayan
Graham Moses III and Ellen Moses
Marcia and Carl Moskowitz



Sue and Joel Picus
Gary and Marilyn Ratkin
John and Eunice Reichman
Sandi Rich
Earl and Laurie Rosenberg
Leah Rubin & Jeffrey Cohen
Linda Rubin
Jerome and Linda Sandmel
Fred and Sheri Seigel
Stanford and Andy Shanker
Gary and Janice Sherman
Michele and Patrick Siler
Dale and Merle Singer
Sandra Sher
Leonard and Sharon Smith
Alan and Ann Spector
Peggy Steinberg
Virginia Weiss
Harvey Weiss

Mazel Tov to our February B'Mitzvah students!

Mazel Tov to **Zachary Pollock**,
child of Jason & Amy Pollock

Mazel Tov to **Abby Schreiber & Lily Schreiber**,
children of Marc & Erin Schreiber

Mazel Tov to **Reese Weinhaus**, child of Corey & Emily Weinhaus



Zachary Pollock



Reese Weinhaus



Lily Schreiber



Abby Schreiber

Simchas

Mazel Tov to **Sheila Cohen** on the birth
of her great-grandson, **Avraham
Gavriel (Avi)**. Proud parents are **Zoe
and Yigal Goldstein**. Grandparents are
Beth Cohen and Harry Berman.

Welcome!

NEW MEMBER FAMILIES

Carlee and Colton Ayers-Schalk

Beth and Chris Brozyna

Jessica and Andrew Kichura,
with child, Jonah

Stephanie and Ramin Lalezari,
with child, Talia

Marla and Jack McDonnell

Allison Neuman,
with child, Lily Tzadok

Kim Phillips and Mary Ann Nye

CONDOLENCES

Miriam Dennison

Earl Portnoy

Norma Rader

Wife of Edward Rader

Bernard Salky

Father of Ken (Molly) Salky

Rose Waldman

SYMPATHY

Debra Baker on the death of her mother, **Brenda Solomon**

Kenny (Barb) Bressler on the death of his father, **Leo Bressler**

John (Julie) Ernst on the death of his mother, **Kathleen Ernst**

Nanci Goldberg and Greg (Julie) Yawitz on the death of her sister and their aunt, **Jane Glusman**

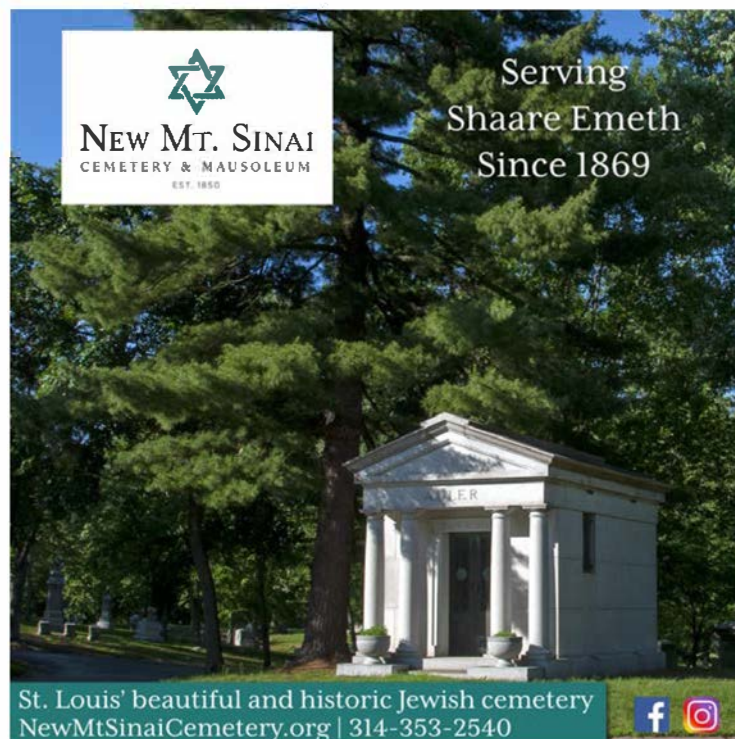
Cheryl Perry on the death of her father, **Richard Forcheimer**

Kelly Schumaker on the death of her aunt, **Loretta Dobkin**

Clifford (Joan) Segal and Andrea (Lawrence) Goldstein on the death of their Daughter-in-law and sister-in-law, **Melinda Segal**

Shirley (Andrew) Wise and Sam (Kelli) Wise on the death of their brother and uncle, **Robert Sontag**

We express condolences to Shaare Emeth members and families who have recently lost a loved one and sympathy to Shaare Emeth members who have had a death in their extended family.



PERPETUAL MEMORIALS

A memorial has been established for:

Melford Berns

Established by Suzan Berns

Joanne Minnihan

Established by Kevin Minnihan and Family

Jan Stephanie Zeid

Established by Stewart Zeid

Ashley Zeid and Brittany and Andrew Jerram

Names of those remembered by a Perpetual Memorial are read during Friday Shabbat Services. They will also be remembered by yahrzeit date reminders sent to designated family members' homes and are automatically included with the Perpetual Memorials in our memorial book on Yom Kippur. For more information on establishing a Perpetual Memorial, contact Stacy Jespersen at SJespersen@sestl.org or 314-692-5302.



Weekly Yahrzeit listings can be found online at sestl.org/yahrzeits.

Providing traditional, dignified funeral services

At the time of your need, or pre-arranged

Rindskopf-Roth
FUNERAL CHAPEL
(314) 367-0438

RABBIS' SPECIAL FUND

IN APPRECIATION OF:

Rabbi Bennett for officiating at the wedding ceremony for Matthew Fox & Alyssa Shannon

Barbara Cotlar

Rabbi Goldstein for performing the stone dedication for Brenda Baron

The Baron Family

Rabbi Goldstein for the Mindfulness Zoom programs

Arlene Goodman

Rabbi Goldstein for officiating at the funeral for Kay Diamont

Shelly Grossman, Mike Diamont and Raye Katz

Rabbi Goldstein for officiating at the funeral for Ethel Mae Lerner

The Ethel Lerner Family- Gary, Dean, Donna and Eve

Rabbi Goldstein for her warmth and deep understanding of prayer and Torah

Jan Nykin

Rabbi Goldstein for performing the baby naming for Zoe Sher

Debbie & Brian Sher

Rabbi Lori Levine for officiating at the shiva for Jerrold Granok's family

Howard Granok

Shaare Emeth

Roma Wittcoff

IN HONOR OF:

Rabbi Bennett for a speedy recovery

Lorry Blath; Arleen & Howard Bly; Sandy Brickman; B'Yachad Rosh Chodesh Group; Carol & Bruce Canis; Sheila Cohen; Sheila & Robert Cohen; Sharon & Warren Danzinger; Sharee & Mark Feldman; Jan Fishman; Sherri & Rick Goldman; Arlene Goodman; Debbie & Karl Guyer; Phylis Kahn; Jackie & Ken Kleban; Dolores Kling; Marsha & Simon Koski and Family; Linda & Bill Levin; Gail & Robert Mielziner Jr.; Brenda & Joe Pereles; Barbie Barenholtz Present & Ron Present; Marilyn & Gary Ratkin; Peggy & Alan Schaffer; Joy Seltzer & Wayne Hoffman; Andy & Stan Shanker; Merle & Dale Singer; Ann & Alan Spector; Susan & Alan Witte

Amy & Rabbi Jim Bennett on the birth of their granddaughter, Aria Bayla Bennett

Barbara Cotlar; Joyce & Larry Kolker; Marsha & Bob Luhrs; Andy & Stan Shanker

Carole & Jay Goldstein on their 55th wedding anniversary

Susie & Leon Kravetz

IN MEMORY OF:

Clara & Saul Freedman, Henrietta & Rudolph Freedman and Sophie & Joseph Winesuff

Judith Freedman

Sandra & Rudy Mayer

Julie & Joel Mayer

Jerry Margolies

Mark Margolies

Arline & Meyer (Bud) Inger, Stuart Katz and Neil Stein

Judy & Jerry Shanfeld

Irving Muller

Rina & Paul Kenkel

Eileen Richman

Jody & Morris Seligman and Family

Harold Rosen

Judy & Jerry Kreisman

Harry Taryle

Barbara & Ira Einsohn

Carol & Dale Wolf

Arlene Goodman

BEMA FLOWER FUND

IN HONOR OF:

Abby & Lily Schreiber on becoming a B'nei Mitzvah

Debbie & Karl Guyer and

Susan Schreiber

Reese Weinhaus on becoming a Bat Mitzvah

Emily & Corey Weinhaus

IN MEMORY OF:

Leonard Bushman

Tama Bushman, The Schwartz and

Wax Families

Anna Handler

Sharon & Richard Safron

JOSEPH & LILLIAN BEIL ISRAEL FUND

IN MEMORY OF:

Adaline Smith Robinson

Sarajane & John Schwartz, Trevor A. Schwartz, Taube B.

Schwartz and Dr. Howard Robinson

B'NAI EL TZEDAKAH FUND

IN MEMORY OF:

Jerrold Granok

Janet Goldman

BROCKMAN-SIEGELMAN GEMILUT HASADIM FUND

IN MEMORY OF:

Helen & Oscar Brockman, Evelyn & Sidney Goldberg, Wilma & Caroline Siegelman &

George Siegelman

Ronnie & Allen Brockman

SADIE & SIDNEY S. COHEN MUSIC FUND

IN MEMORY OF:

Leane Mendelsohn

Mindy & Gordon Rennard and Family

MICAH DAVIS MEMORIAL FUND

IN MEMORY OF:

Dallas Mange

Norman Davis

The tributes listed here are those made for \$10 or more and processed December 1-31, 2023. A tribute gift made in another's name is a lovely way to honor a friend for a recent *simcha* (joyous occasion), to honor the memory of a deceased loved one on their *yahrzeit* (anniversary of death), or to show appreciation for someone. To make a tribute donation, visit sestl.org/give. Hard copy forms are available in the Shaare Emeth North lobby vestibule or you may email JMcginty@sestl.org

SHIRLEE GREEN PRESCHOOL FUND

IN APPRECIATION OF:

The Shirlee Green Preschool

Judith & Steve Kaufman

IN MEMORY OF:

Dick Levinson

Sherri & Bruce Tons

IDA & HARRIS KRAMER SOCIAL ACTION FUND

IN HONOR OF:

The Brandvein Family on receiving the L'Dor VaDor Award

Linda & Ed Dahl

NANCY LEVIN PRESCHOOL FUND

IN MEMORY OF:

Don Levin

Sue & Roger Frankel; Aleene S. Zawada

LISA'S STAR FUND FOR CAMP EMETH

IN HONOR OF:

Rabbi Bennett for a speedy recovery

Erin, Marc, Abby & Lily Schreiber

IN MEMORY OF:

Shirley Inez Appel

Adrienne, Jay, Emma, and Arielle Magner

STANLEY LYSS & ESTHER LYSS-GREENSTEIN LIFELONG LEARNING FUND

IN MEMORY OF:

Samuel Lyss

Lynn & Dr. Carl Lyss

IN HONOR OF:

Rabbi Bennett for a speedy recovery

Lynn & Dr. Carl Lyss

MICHAEL MATLOF CONNECTION & COMMUNICATION FUND

IN HONOR OF:

Amy & Rabbi Jim Bennett on the birth of their granddaughter, Aria Bayla Bennett

Barbara & David Furman

Carole & Jay Goldstein on their 55th wedding anniversary

Barbara & David Furman

Fran Mannis on her special birthday

Sue Matlof

Sue Matlof on her special birthday

Harriet Summers & Alan Sherman; Diane & Steve Weinstock

Judie Shiff on her special birthday

Margie & Martin Jaffe; Sue Matlof; Harriet Summers &

Alan Sherman; Diane & Steve Weinstock

IN MEMORY OF:

Ben Dalin

Debbie & Karl Guyer

Jeffrey Korn

Harriet Summers & Alan Sherman

Joni Koven

Judy & Bob Beckerman

Adeline Mass

Louise Mass

AUDREY MONTAGUE PRESCHOOL OPERATIONS ENHANCEMENT FUND

IN HONOR OF:

Diana & Joel Schmidt on their 65th wedding anniversary

Becky Vesper Goldberg & Bobby Goldberg

IN MEMORY OF:

Marsha Heligman

Larry Buxner

OPERATIONS ENHANCEMENT FUND

IN HONOR OF:

Barbara & Joseph Kennington on their granddaughter, Brooke Buck, becoming a Bat Mitzvah

Sue Wallach

Craig Neuman on his new position as Executive Director at Shaare Emeth

Harvey Greenstein

Rosalie Stein to thank and offer best wishes on her retirement

Harvey Greenstein

IN MEMORY OF:

Arlene DeBlasi

Ann & Alan Spector

Kathleen Ernst

Brenda & Joe Pereles

Eric Goldman

Janet Goldman and Herbert Goldman

Jane Glusman

Brenda & Joe Pereles

Ruby & Ben Koslow

Marcia & Hans Oberdorfer

Friedel, Olga and Samuel Oberdorfer

Marcia & Hans Oberdorfer

Ethel Lerner

Amy & Jim Kalishman

Jeanne S. Milder

Rabbi Laurence Milder

Hal Rosen

Sherri & Rick Goldman; Brenda & Joe Pereles

Rabbi Samuel Sale

Llewellyn Sale III

Margaret Smith

Sharon & Leonard Smith

GARY & MARILYN RATKIN SOCIAL ACTION EDUCATION FUND

IN HONOR OF:

Marilyn Ratkin on her special birthday

Ellen Rumelt; Sharry & Steve Solomon

Ellen Rumelt on her special birthday

Marilyn & Gary Ratkin

THE REICHMAN FAMILY MUSIC FUND

IN HONOR OF:

Eunice & John Reichman on the birth of their great-granddaughter, Emilia Sage

Earl Salsman

Eunice & John Reichman on their special 60th wedding anniversary

Earl Salsman

RELIGIOUS SCHOOL FUND

IN APPRECIATION OF:

Rabbi Lori Levine for performing a beautiful vow renewal ceremony

Berna & Bill Haberman

IN MEMORY OF:

Alan Wallach

Harvey J. Gottlieb

SAM & GOLDYE ROSEN MUSIC FUND

IN HONOR OF:

Bonnie & Steve Rosen on their granddaughter Sydney Rosen becoming a Bat Mitzvah

Susan & Alan Witte

Rita & Barry Worth on their special 60th wedding anniversary

Gail & Charles Eisenkramer

IN MEMORY OF:

Bessie Newman

Rita & Barry Worth

Hal Rosen

Arlene & Michael Corson; Linda & Ed Dahl;

Susan & Alan Witte

HARVEY & LEANNE SCHNEIDER INTERFAITH FORUM

IN MEMORY OF:

Hannah Solomon Rosen

Bonnie & Norman Solomon

JOAN & HARRY SELTZER FAMILY FUND FOR IMPROVING WOMEN'S LIVES

IN HONOR OF:

Luke Hoffman on his birthday

Joan Seltzer

Alex Schupp on his birthday

Joan Seltzer

Jill Schupp on her birthday

Joan Seltzer

Joan Seltzer on her birthday

Cynthia & Garry Seltzer; Wayne Hoffman & Joy Seltzer

FAYE H. & ROBERT J. SIEGEL SETYG PROGRAM FUND

IN HONOR OF:

Patti & Bruce Garber on their wedding anniversary

Lucille Schwartz

SIMONS FAMILY ACCESS FUND

IN MEMORY OF:

Ruth Eltinge

Marci & Ronn Diamond

STIFFMAN RABBINIC CHAIR FUND

IN HONOR OF:

Mary & Cary Lang on their 60th wedding anniversary

Leanne & Harvey Schneider

IN MEMORY OF:

Melvin A. Greenspoon

Barbara Ellen Greenspoon and Irene Rosalie Funk

Greenspoon (z'l)

RABBI JEFFREY B. STIFFMAN LECTURE FUND

IN APPRECIATION OF:

The Shaare Emeth Caring Committee for the beautiful holiday gifts

Dolores Kling

IN HONOR OF:

Don Soffer on his birthday

Jackie & Marty Lipsitz

IN MEMORY OF:

Harry Collinger

Douglas Collinger

Hal Rosen

Diana R. Barnholtz

Sarah Zuckerman Wiener

Jan Fishman; Andy & Stan Shanker

TEMPLE ENDOWMENT FUND

IN HONOR OF:

Rabbi Bennett for a speedy recovery

Janice & Gary Sherman

BETTY & BORIS TUREN MEMORIAL EDUCATION FUND

IN HONOR OF:

Their family for a wonderful holiday and a happy and healthy 2024

Jan & Bob Abrams

KATHY & MARTY ZIGLER FUND FOR ENRICHMENT OF PRESCHOOL TEACHERS

IN HONOR OF:

Rabbi Bennett for a speedy recovery

Michael, Linda, Gregory and Allison Adler

IN MEMORY OF:

Marian Feir

Devora Molitor

Marlene Rotolo

Sandy & Phil Brooks

THANK YOU TO OUR SPONSORS



BERGER MEMORIAL

Providing professional,
compassionate care to
the St. Louis Jewish
community for more
than 115 years.

Richard W. Stein
Emily Stein MacDonald
314-361-0622
bergermemorialchapel.com

 **THOMPSON
COBURN LLP**



STEVEN B. GORIN
Thompson Coburn LLP
Attorneys at Law
314 552 6151
sgorin@thompsoncoburn.com

*Fellow, American College of
Trust and Estate Counsel*

*Estate and Tax Planning for
Business Owners and Individuals*

BULLETIN ADVERTISING

Get eyes on your business by
advertising in the Congregation
Shaare Emeth Bulletin! As our
primary publication, the Bulletin is
printed and circulated to:



1,650+ Homes

A LOCAL AUDIENCE



Though we mail to 150
zip codes nationwide,
the vast majority are in
St. Louis, MO.



2,500+ E-mails



Posted on our website with
clickable links to YOUR website.

For more information contact **Beth Kodner**,
Director of Development & Membership
at bkodner@sestl.org or (314) 692-5306.



TENNIS AND SWIM CLUB

Forest Lake Tennis and Swim Club features 8 climate-controlled indoor
tennis courts (open year-round), 5 outdoor tennis courts, 6 outdoor
pickleball courts, and an outdoor Olympic-sized swimming pool.
Memberships, clinics, teams, leagues, and more are all available.



Our pool proudly hosts Camp Emeth
every summer!

**Named 2022 USA St. Louis
Member Organization of the Year**



Visit us at 1012 N. Woods Mill Road in Chesterfield
or online at forestlaketenniscub.com

CLERGY

RABBIS

James M. Bennett
Andrea M. Goldstein, DMin
Rachel K. Bearman

CANTOR

Seth P. Warner

RABBI EDUCATOR

Lori Levine

RABBI EMERITUS

Jeffrey B. Stiffman

STAFF

EXECUTIVE DIRECTOR

Craig Neuman

DIRECTOR OF JEWISH LIFE & LEARNING

Debbie Bram

DIRECTOR OF OPERATIONS

Robert Colton

DIRECTOR OF DEVELOPMENT & MEMBERSHIP

Beth Kodner

DIRECTOR OF SHIRLEE GREEN PRESCHOOL

Brandi Kanoya

DIRECTOR OF COMMUNICATIONS

Hannah Michelson

DIRECTOR OF MUSIC ENGAGEMENT

Lucy Greenbaum

DIRECTOR OF FAMILY ENGAGEMENT & MEMBERSHIP

Emily Cohen

DIRECTOR OF CAMP EMETH

Laura Horton

YOUTH ENGAGEMENT SPECIALIST

Helena Cooper

MAIN OFFICE ADMINISTRATORS

Tammy Beaird
Valerie Cundy
Stacy Jespersen
Jana McGinty
Maggie Muhr

SCHOOL ADMINISTRATORS

Kayla Adams
Jessy Burnett
Marci Diamond
Emily Throgmorton

Time Sensitive Material

Non-Profit
Organization
Us Postage
PAID
St. Louis, MO
Permit #5844

BOARD OFFICERS

PRESIDENT

Bill Remis

FIRST VICE PRESIDENT

Dana DeBlasi

VICE PRESIDENTS

David Goran
Rachel Pereles
Michael Sherberg

Michele Siler

Lisa Suffian

SECRETARY

Randy Brodsky

TREASURER

Mark Gubernik

ASSISTANT TREASURER

Natalie Kalmar

MEMBERS AT LARGE

Mike Vredenburg
Kathy Wiesman

IMMEDIATE PAST PRESIDENT

Josh Wallach

The Bulletin is published ten times per year by Congregation Shaare Emeth. For more information, please call the Temple office at 314.569.0010. For the most up-to-date information, make sure you're receiving ShaareMail - our weekly e-newsletter. Sign up on our website at sestl.org or text SHAAREMAIL to 22828.