



CONGREGATION SHAARE EMETH

BULLETIN

SEPTEMBER & OCTOBER 2024

Jubilation
A Heart & Soul
Celebration

See Page 20

Rabbi David Saperstein
and Dr. Tevi Troy, Deutsch
Scholars-In-Residence

See Pages 8 & 9

High Holiday Guide

2024 • 5785

SEPTEMBER + OCTOBER WORSHIP & TORAH STUDY SCHEDULE

On Friday evenings, Nosh begins at 5:15 p.m. prior to Shabbat services, which take place in the Stiffman Sanctuary, unless otherwise noted.

Friday, September 6, 2024

6 p.m. *L'Dor VaDor Intergenerational Kabbalat Shabbat Service:
September Blessings – Birthdays & Simchas*

Saturday, September 7, 2024

9:30 a.m. *Torah Study*
11 a.m. *Shabbat Morning Service: Lucas Lazarus, child of
Julie and Todd Lazarus, becomes a Bar Mitzvah*

Friday, September 13, 2024

6 p.m. *Kabbalat Shabbat Service with Rabbi David Saperstein,
Deutsch Scholar-in-Residence, see pages 8 & 9*

Saturday, September 14, 2024

9 a.m. *Shabbat Morning Service: Alex Fine, child of
Amy and Jason Fine, becomes a Bar Mitzvah*
9:30 a.m. *Torah Study with Rabbi David Saperstein, see page 8*
11 a.m. *Shabbat Morning Service: Olivia Esses, child of
Stephanie Esses and Julia Partin, becomes a Bat Mitzvah*

Friday, September 20, 2024

6 p.m. *Kabbalat Shabbat Service,
YPD Shabbat Shalom STL, see page 7*
6 p.m. *Prayer Lab*

Saturday, September 21, 2024

9:30 a.m. *Torah Study*
11 a.m. *Shabbat Morning Service: Matthew Virgin, child of
Stefanie and Christopher Virgin, becomes a Bar Mitzvah*

Friday, September 27, 2024

6 p.m. *Tzedek Kabbalat Shabbat Service with Room at the Inn*

Saturday, September 28, 2024

9:30 a.m. *Torah Study*
7 p.m. *Selichot Program & Service, details on page 7*

Wednesday, October 2, 2024

7:30 p.m. *Erev Rosh Hashanah Service*

Thursday, October 3, 2024

9 a.m. *Boker Tov Rosh Hashanah*
10 a.m. *Rosh Hashanah Morning Service*
11 a.m. *L'Dor VaDor Rosh Hashanah Service*
4 p.m. *Tashlich Service*

Friday, October 4, 2024

6 p.m. *Shabbat Shuva*

Saturday, October 5, 2024

9:30 a.m. *Torah Study*

Sunday, October 6, 2024

11 a.m. *Kever Avot v'Imahot Memorial Service of Remembrance at
New Mt. Sinai Cemetery's Community Mausoleum*

Friday, October 11, 2024

7:30 p.m. *Kol Nidre • Erev Yom Kippur Service*

Saturday, October 12, 2024

9 a.m. *Boker Tov Yom Kippur Service*
10 a.m. *Yom Kippur Morning Service*
11 a.m. *L'Dor VaDor Yom Kippur Service*
3:30 p.m. *Yom Kippur Yizkor/Healing/Neilah Service*

Wednesday, October 16, 2024

6 p.m. *Erev Sukkot: Pizza in the Hut, details on page 16*

Friday, October 18, 2024

6 p.m. *L'Dor VaDor S'more Sukkot Shabbat Celebration & Service:
October Blessings – Birthdays & Simchas, details on page 16*

Saturday, October 19, 2024

9:30 a.m. *Torah Study*
11 a.m. *Shabbat Morning Service: Joshua Horwitz, child of
Julie and Joseph Horwitz, becomes a Bar Mitzvah*

Wednesday, October 23, 2024

6 p.m. *Erev Simchat Torah Service, details on page 17*

Thursday, October 24, 2024

9 a.m. *Simchat Torah Yizkor Service, details on page 17*

Friday, October 25, 2024

6 p.m. *Kabbalat Shabbat Service*

Saturday, October 26, 2024

9 a.m. *Shabbat Morning Service: Naomi Sherman, child of
Jane and Seth Sherman, becomes a Bat Mitzvah*
9:30 a.m. *Torah Study*
11 a.m. *Shabbat Morning Service: Miriam Wallace, child of
Elizabeth and Brad Wallace, becomes a Bat Mitzvah*

HIGH HOLIDAY DETAILS BEGINNING ON PAGE 11 & AT [SESTL.CO/HHD24](https://sestl.co/hhd24)

Our beautiful High Holiday artwork was created by Laura Bolter, an artist, illustrator, calligrapher, & Shaare Emeth member.

MAY THIS BE A GOOD NEW YEAR!

By Rabbi James M. Bennett

JBennett@sestl.org



"Today was a Difficult Day," said Pooh. There was a pause.

"Do you want to talk about it?" asked Piglet.

"No," said Pooh after a bit. "No, I don't think I do."

"That's okay," said Piglet, and he came and sat beside his friend.

"What are you doing?" asked Pooh.

"Nothing, really," said Piglet. "Only, I know what Difficult Days are like. I quite often don't feel like talking about it on my Difficult Days either. "But goodness," continued Piglet, "Difficult Days are so much easier when you know you've got someone there for you. And I'll always be here for you, Pooh."

And as Pooh sat there, working through in his head his Difficult Day, while the solid, reliable Piglet sat next to him quietly, swinging his little legs... he thought that his best friend had never been more right."

- A.A. Milne, in Winnie the Pooh

For many, this has been a year of difficult days. Much has troubled us as individuals, as Jews, as Americans, as human beings. Sadly, many of us have chosen not to talk about it much, either. Far too many people, knowing what difficult days feel like, have retreated into our own safe spaces, surrounded only by others who we are certain agree with us, or worse, into our own places of silence, isolation, loneliness, or denial.

This is not to say that there have not been many moments of joy or celebration or happiness over the past year. Surely there have been, and for this, many of us are profoundly grateful.

Yet the overwhelming sense that many of us carry into the approaching New Year is one of cautious hope, and tentative optimism. As they do each year, our High Holy Days approach as a reminder, though, that we are not alone. The idea of Jews coming together, sitting down next to each other, in person, and welcoming a new year is our way of saying to each other, "Difficult Days are easier when you have someone there for you. And I'll always be here for you."

As we prepare to enter the new year, 5785, all of us at Shaare Emeth are here for you. Let's all be here for each other. May this be a good new year, A year of sweetness, a year of health and life, a year of joy, contentment, meaning, and peace.

HOLIDAY BUILDING CLOSURES

Congregation Shaare Emeth's Main Office and Shirlee Green Preschool will be **closed**:

- Monday, September 2** in observance of Labor Day.
- Thursday, October 3** in observance of Rosh Hashanah.
- Thursday, October 17** in observance of Sukkot.
- Thursday, October 24** in observance of Simchat Torah.

The Main Office and Shirlee Green Preschool will **close early at 4 p.m. on:**

- Wednesday, October 2** for Erev Rosh Hashanah.
- Friday, October 11** for Erev Yom Kippur.

The Main Office will **close early at 4 p.m. on:**

- Wednesday, October 16** for Erev Sukkot.
- Wednesday, October 23** for Erev Simchat Torah.

Religious School will not be held on **October 6 or 13** in observance of Rosh Hashanah & Yom Kippur.

ONE STEP AT A TIME

By Craig Neuman, Executive Director

CNeuman@sestl.org



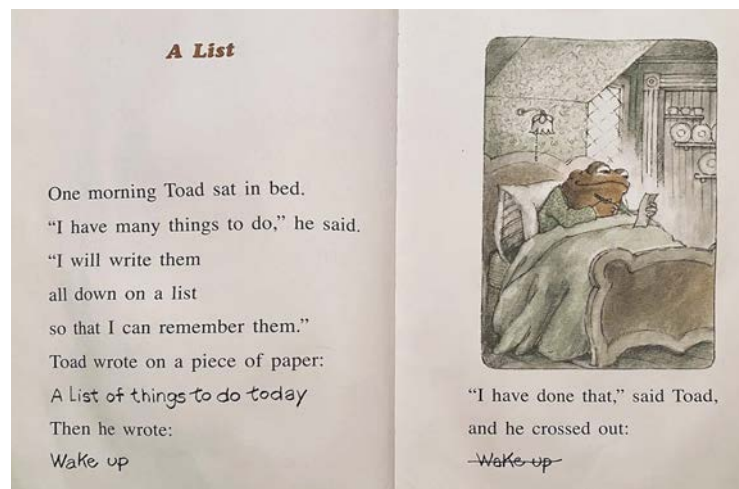
It was Wednesday, September 26, 2012 (10 Tishrei 5773). Yom Kippur. I was sitting in services listening intently to the rabbi's sermon. Unsurprisingly, the rabbi was talking about all the ways in which we could improve as humans. In contemplating the vastness of the task, he said, the daunting undertaking of self-

improvement can be overwhelming. After all, few among us is just one or two changes away from being perfect. The rabbi gave this sage advice: take it one step at a time.

That suggestion resonated with me. I was (and still am) a person with many flaws. But that fall, I decided to heed the rabbi's advice and take one step. I focused on a ritual (lighting Shabbat candles) that I hoped would serve as a catalyst for me to pause my hectic life for a moment, reflect upon the week that was, and envision a "better" week to come. And it worked. Not only did it provide a weekly grounding for my soul, but, logistically, it helped me and my family to have a more planful (and, therefore, calmer) week ahead. The next fall, I decided to take a step towards being more patient. I'm still working on that one. The concept of not succumbing to the pressures of all that stands before us and taking things one step at a time is one that I have embraced in my professional life as well. As you can imagine, stepping into the role of Executive Director has provided me with ample opportunity to do so.

ONE STEP
AT A TIME

I mentioned in a previous bulletin article that one of my first orders of business was to examine/improve our financial processes. Over the past eight months, I have worked with staff and lay leadership to look at our operational budget, our endowments and our restricted funds to ensure they are being



From *Frog and Toad Together: A List* by Arnold Lobel

managed according to generally accepted accounting principles (GAAP). I am happy to report that we are in good shape in this regard, and I'm working with our finance and endowment committees to ensure it remains so in the future. As we head into next year, we're undertaking a new budgeting process which I hope will help to create more insight into the way we receive and spend money. Ultimately, this will help us operate more efficiently and effectively.

The progress made in this area allows me to shift my focus to a new area of priority: member engagement. Make no mistake, Shaare Emeth is already very strong in this area. We are blessed with a dedicated and passionate community who care for one another and the community at large. And we can do better.

For me, that means working with Shaare Emeth staff and lay leaders to strengthen our inclusive and vibrant community where members feel a deep sense of belonging and connection. It means fostering meaningful relationships through diverse programming that appeals to all age groups and interests, through educational, social, spiritual, and volunteer opportunities. By prioritizing engagement, we can strengthen our community bonds, support the spiritual growth of our members, and enhance our already welcoming environment so that everyone is motivated to contribute to the collective well-being.

How will we do this? One step at a time. I look forward to sharing our progress in the weeks and months ahead.

As we step into this new year, I would like to wish you all Shanah Tovah and may each day bring you one step closer to your dreams.

OH, THE PLACES WE'LL GO!

By Dana DeBlasi, President

President@sestl.org



During the years that I have been a member of this community, I have witnessed the resilience, kindness, and generosity that characterize our Congregation. It's clear to me, and likely to you as well, that Congregation Shaare Emeth is truly special...but not perfect. None of us are. The coming High

Holiday season calls on us to reflect on our actions over the past year and consider our approach for the forthcoming year.

Personally, I find this time where I 'have to' separate myself from the tasks of my usually busy life and can be intentionally introspective and honest with myself, has been a gift. While I hope to go through life reflecting on my actions each day and how I can do better for myself, my loved ones, friends, and community, the High Holidays puts this front and center.

What have I done well, and what can I do better? How have I connected with the people in my life and with God, and how can I deepen my relationships? How have I been supportive of others, and how can I be more available? While I expect we each ask ourselves similar questions, I suggest to you that we should also do so as a Congregation, as a community.

During my short time as President so far, I have been working with our leadership, staff, and Clergy to consider how we formalize a process of reflection and determined how we can do better and move from strength to strength.

How do we evaluate our accomplishments, and how do we identify areas for improvement?

How do we foster connections as a community and with God, and how can we be more open, welcoming, respectful, and inclusive?

How can we evaluate our support of one another, and how will we explore ways in which we can strengthen the bonds between us?

As I have mentioned, and it is fitting during this season, this fall we will be pursuing a Strategic Plan that will offer us a formal process to ask ourselves these very questions. These fundamental questions need not be tackled in isolation but rather collectively, as a Congregation and as a community.

I look forward to seeing you during this special time as we get together for prayer and reflection. I am inspired by where we are as a congregation and our possibilities for the future. I appreciate your involvement and support as we undertake the sometimes difficult work of change with open minds and hearts. To reach our highest potential, we need to truthfully assess where we have been and determine how to do even better in the future.

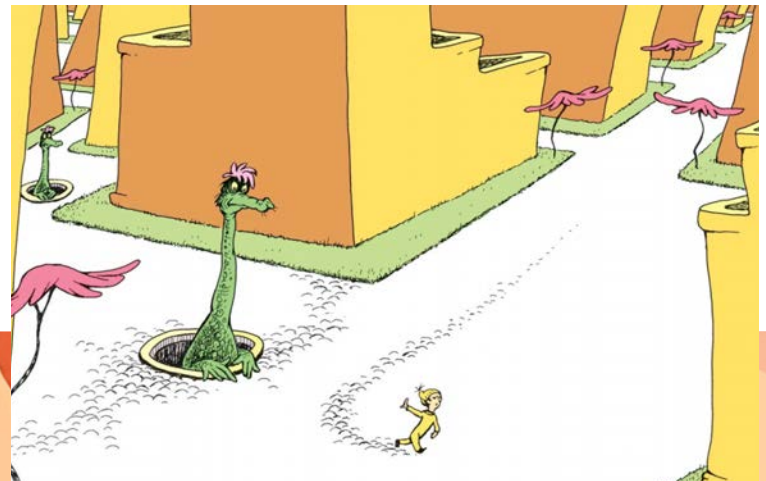
Shanah Tovah Umetukah, a good and sweet year to you and your loved ones.

“ We'll look up and down streets.
Look 'em over with care.

About some we will say,
"We don't choose to go there."

With our heads full of brains
and our shoes full of feet,

We're too smart to go down any
not-so-good street. ”



Oh, the Places You'll Go! by Dr. Seuss

Elul Programs

SEPTEMBER

TUE

10 & 17 HOW TO PREPARE YOURSELF FOR THE HIGH HOLIDAYS

10 A.M. • LIBRARY CONFERENCE ROOM

TEXTING TUESDAYS: WHERE JEWISH LEARNING COMES ALIVE

With Cantor Seth Warner • A two-part Texting Tuesdays exploring how we can come to terms with the year that is ending and open ourselves up to new possibilities in the year ahead. **Register at sestl.co/text**

FRI + SAT + SUN

13 & 14 & 15

DEUTSCH SCHOLARS-IN-RESIDENCE RABBI DAVID SAPERSTEIN & DR. TEVI TROY

1 WEEKEND. 2 SCHOLARS. 3 EVENTS.

Rabbi David Saperstein is one of the most distinguished rabbinic voices of our time. Over this Shabbat evening and morning, he'll address Israel, American Jewry, Antisemitism, and more. **Details on page 8 & 9.**

SUN

22 JEWS BY CHOICE DINNER

6:30 P.M. • FALLON'S IRISH BAR & GRILL OLIVETTE

Shaare Emeth community members who have converted or are in the process of converting are invited to join us for our first Jews By Choice (JBC) dinner. Read more on page 24. **RSVP at sestl.co/jbc922**

TUE

24 A TASTE OF TRADITION: HOLIDAY RECIPES & STORIES

10 A.M. • LIBRARY CONFERENCE ROOM

TEXTING TUESDAYS: WHERE JEWISH LEARNING COMES ALIVE

With Debbie Bram • Share your treasured High Holiday recipes and the stories behind them. Participants are encouraged to bring recipes and samples to share (if possible)! **Register at sestl.co/text**

WED

25 SHOFAR SO GOOD

7 P.M. • JEWISH MINDFULNESS CENTER

UNLOCKING SPIRITUAL SECRETS OF THE SOUNDING OF THE SHOFAR

• What do the shofar's sounds signify and how do they help us on our spiritual journeys during these holy days? Join Rabbi Goldstein in unpacking lesser-known teachings surrounding one of Rosh Hashanah's most beloved traditions. **Register at sestl.co/shofar24**

WED-SUN

25-29 SHAARE-ING SWEETNESS WITH SENIORS

VOLUNTEER OPPORTUNITY!

Help our Caring Committee share the sweet New Year with homebound seniors and those in senior living facilities by delivering a holiday bag and spending time visiting. Take a friend, grandchild, or the whole family. **Register by September 20 at sestl.co/sweetness**



Elul, the Hebrew month leading up to the holidays of Rosh Hashanah and Yom Kippur, is a time set aside for spiritual strengthening and growth in anticipation of the New Year. Congregation Shaare Emeth and the Jewish Mindfulness Center of St. Louis offer a wide variety of practices to prepare our hearts and minds for these holy days.

Elul Programs

SEPTEMBER

FRI

20 YPD SHABBAT SHALOM STL

6 P.M. • SHAARE EMETH

RSVP BY SEPTEMBER 18

Jewish Federation of St. Louis' Young Professionals Division (YPD) is wrapping up their summer Shabbat Shalom STL series at Shaare Emeth with services and dinner. Free! **Register at sestl.co/ypd**



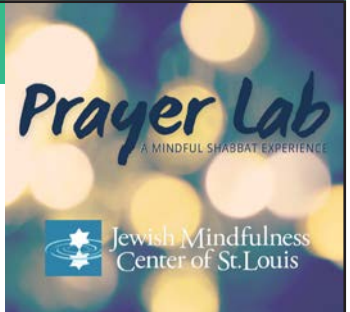
FRI

20 PRAYER LAB FOR ELUL

6 P.M.

KEHILLAH CENTER

PRAYER LAB RETURNS! Join Rabbi Goldstein and the Prayer Lab musicians for this non-traditional service incorporating the themes of Elul, contemporary readings, poetry, music, and more. **No RSVP required.**



TUE

2ND ANNUAL

24 ROSH HASHANAH CHALLAH BAKE

6-7:30 P.M. • SIMCHA CENTER

A FUN, YUMMY, INTERGENERATIONAL EVENT!

Make a round challah for our Rosh Hashanah Caring Bags for seniors, prepare dough from scratch to finish baking at home, learn braiding techniques, enjoy a pizza dinner, and more! \$25/family. **Register by September 17 at sestl.co/challah24**



FRI

27 RETURNING HOME: MINDFUL MOVEMENT FOR ELUL

10 A.M. • JEWISH MINDFULNESS CENTER

Join Dani Glassman, LMT, RYT-500, MSW, for this embodied teshuva (returning) practice, as she brings us back to feelings of acceptance and gratitude for the bodies we have been gifted.

Register at sestl.co/elulyoga

SAT

28 SELICHOT: OUR LAST REPAIR SHOP

7 P.M. FILM & PROGRAM • 9 P.M. SERVICE



We'll begin with a screening of the Oscar-winning documentary film "The Last Repair Shop" followed by a discussion, dessert reception, and service, ending in quiet candlelight. **RSVP at sestl.co/selichot24**



SEEKING CLARITY

in Challenging Times

Our Deutsch Scholars-in-Residence
Rabbi David Saperstein

Rabbi David Saperstein is the Director Emeritus of the Religious Action Center of Reform Judaism, where he served as director and counsel for 50 years. Saperstein is recognized by Newsweek as one of the most distinguished rabbinic voices of our time.

**Israel, America, and American Jewry:
Reflections on the Lasting Impact of
Oct. 7th and the War in Gaza**

Kabbalat Shabbat

Friday, September 13

5:15 p.m. Nosh • 6 p.m. Service

**The Old-New Antisemitism:
Addressing the Crisis**

Torah Study

Saturday, September 14

9 a.m. Continental Breakfast

9:30 a.m. Program

RSVP at sestl.co/clarity



About Our Deutsch Scholars-In-Residence:

Rabbi David Saperstein

U.S. Ambassador - Obama Administration

Director Emeritus, Religious Action Center (RAC)

CONGREGATION



SHAARE EMETH

Founded in 1867

Eilu v'Eilu and the programs above are sponsored by the Fred and Elsie Deutsch Endowment Fund of Congregation Shaare Emeth. The Congregation would like to thank Roberta and Jim Deutsch, Judy and Larry Deutsch, and their families for their generous support for the Scholar-in-Residence program.

Eilu v'Eilu אלו ואלו

A Debate on Jewish Values & American Politics in the Context of the 2024 Election

Sunday, September 15

7 p.m. at Congregation Shaare Emeth

As the election draws near, in the spirit of Eilu v'Eilu (principled disagreement; literally 'these and those'), Dr. Tevi Troy and Rabbi David Saperstein discuss differing principles and policies in service to the interests of American Jewry, global Jewry, and Israel.

At this critical juncture in American history, rife with partisanship and discord, our guests expertly demonstrate how even people with sharply differing political, religious, and ideological views can engage in respectful and constructive debate.

REGISTER ONLINE AT sestl.co/debate

Featured Topics:

- Contemporary issues and public policy remedies
- Bipartisanship
- Perspectives on Israel, abortion, affirmative action, climate change, antisemitism, and more
- Insights from Jewish history, tradition, and values



Dr. Tevi Troy

Presidential Historian
Senior Bush White House Aide



WORD BY WORD

29 Words, Reflections, and Questions
to Help Us Prepare for the Days of Awe

29 Words, Reflections, & Questions to Prepare Us for the Days of Awe

Receive this daily email

**Wednesday, September 4 through
Wednesday, October 2, 2024**

Each day during the month of Elul, you will receive a brief email introducing you to one word connected to our spiritual preparations for the High Holy Days. Read the email, spend time with the reflection questions and open yourself to the possibility of growing in awareness, gratitude, and love as we head into the new year.

Sign up to receive *Word by Word* by emailing
Stacy Jespersen at sjespersen@sestl.org.



Elul Meditation Series

**Tuesdays, September 3, 10, 17, and 24
9-9:30 a.m. via Zoom**

Join Rabbi Andrea Goldstein for these special weekly Mindfulness Meditation sittings incorporating teachings, rituals, and symbols of the High Holy Days season. No meditation experience necessary.

**Sign up for our Monday Mindfulness
e-mails at sestl.co/jmccemail for the link
to join via Zoom.**



Wednesday, October 2 6 p.m. • Courtyard

All 20s and 30s are invited to join for this informal, Erev Rosh Hashanah dinner where we'll get to know one another and welcome the holiday as a community.

*Registration & information about dinner options
& pricing is available at sestl.co/rhdinner24*



The High Holidays

AT CONGREGATION SHAARE EMETH • 2024 • 5785

שנה טובה ומתוקה *Shanah Tovah u'Metukah*

As we approach the High Holidays, we reflect on a year that has been particularly challenging. The events of the past year have tested our resilience and strength, but they have also highlighted the importance of unity and support within our congregation. We needn't all agree politically or ideologically to acknowledge the fundamental goodness in each other and show up for each other in times of joy and sorrow.

During this sacred time, we invite you to join us at Congregation Shaare Emeth for worship services and

additional special events designed to add meaning to the season. Let us come together to find solace, healing, and hope in the presence of our community. May these High Holidays be a time of renewal and connection, as we draw strength from our shared traditions and the warmth of being together.

On the following pages, you'll find details on celebrating the High Holidays at Shaare Emeth. The most up-to-date information will be in ShaareMail weekly and on our website: sestl.co/HHD24

EREV ROSH HASHANAH WEDNESDAY, OCTOBER 2

Erev Rosh Hashanah Service
7:30 p.m. • Stiffman Sanctuary 

ROSH HASHANAH THURSDAY, OCTOBER 3

Boker Tov Rosh Hashanah
9 a.m. • Kehillah Center
Families with Young Children (Ages 0-7)

Rosh Hashanah Morning Service
10 a.m. • Stiffman Sanctuary 

Rosh Hashanah L'Dor VaDor Service
11 a.m. • Kehillah Center
Families with Children Ages 8+

Tashlich
4 p.m. • Des Peres Park • All Ages

FRIDAY, OCTOBER 4

Shabbat Shuvah
6 p.m. • Stiffman Sanctuary

SUNDAY, OCTOBER 6

Kever Avot v'Imahot Memorial Service of Remembrance
11 a.m. • New Mt. Sinai Cemetery Mausoleum

EREV YOM KIPPUR FRIDAY, OCTOBER 11

Kol Nidre • Erev Yom Kippur Service
7:30 p.m. • Stiffman Sanctuary 

YOM KIPPUR SATURDAY, OCTOBER 12

Boker Tov Yom Kippur
9 a.m. • Kehillah Center
Families with Young Children (Ages 0-7)

Yom Kippur Morning Service
10 a.m. • Stiffman Sanctuary 

Yom Kippur L'Dor VaDor Service
11 a.m. • Kehillah Center
Families with Children Ages 8+

Yom Kippur Teen Experience
12:30-1:45 p.m. • Kehillah Center
Ages 13-18

Yom Kippur Afternoon
12:30-1:45 p.m. • Session One
2-3:15 p.m. • Session Two

Yom Kippur Yizkor Healing Neilah
3:30 p.m. • Stiffman Sanctuary 

 Service includes ASL interpretation

EREV SUKKOT WEDNESDAY, OCTOBER 16

Pizza in the Hut & Sukkot Blessings
6 p.m. • Courtyard Sukkah

SUKKOT FRIDAY, OCTOBER 18

L'Dor VaDor Sukkot Shabbat Celebration & Service
5:15 p.m. • Sukkot Celebration Nosh
6 p.m. • Service in the Stiffman Sanctuary
7:15 p.m. • S'more Sukkot in the Courtyard

EREV SIMCHAT TORAH WEDNESDAY, OCTOBER 23

Erev Simchat Torah Service
6 p.m. • Stiffman Sanctuary

SIMCHAT TORAH THURSDAY, OCTOBER 24

Simchat Torah Yizkor Service
9 a.m. • B'nai El Chapel



Rosh Hashanah



Adults and teens

EREV ROSH HASHANAH SERVICE

Wednesday, October 2

7:30 p.m. • Stiffman Sanctuary

Join us as we begin the High Holiday season at this moving evening service. With the help of Shaare Emeth's clergy, Lucy Greenbaum, the High Holiday choir, the Mishkan Hanefesh Machzor, and a meaningful sermon, we embark on welcoming the New Year.

Duration: 2 hours



Adults and teens

ROSH HASHANAH MORNING SERVICE

Thursday, October 3

10 a.m. • Stiffman Sanctuary

Welcome the New Year with familiar faces, music, and prayers. This service offers a beautiful way to enter the High Holy Day season with participation from our High Holy Day choir, prayers from the Mishkan Hanefesh Machzor, and a thought-provoking sermon. • *Duration: 2 hours*



Children ages 0-7 and family

BOKER TOV ROSH HASHANAH

Thursday, October 3

9 a.m. • Kehillah Center

Families with young children are invited to join us for this energetic and joyful interactive service. We will dance, sing, and welcome in the Jewish New Year together! Be on the lookout for Joy and her emotional friends from **Inside Out** to help tell the Rosh Hashanah story.

Duration: 30 minutes



Children ages 8+ and family

ROSH HASHANAH L'DOR VADOR SERVICE

Thursday, October 3

11 a.m. • Kehillah Center

Our Rosh Hashanah L'Dor VaDor Intergenerational Service is an interactive worship experience filled with blessings, music, and all the main components of a traditional High Holiday Service, but in a more casual setting with a story-based sermon. • *Duration: 1 hour*

CHILDCARE AVAILABLE FOR AGES 6 MONTHS TO 7 YEARS • SEE PAGE 19 FOR DETAILS



Great for all!

Photo by Bill Motchan for the St. Louis Jewish Light

TASHLICH

Thursday, October 3

4 p.m. • Des Peres Park

Join us at Des Peres Park for this casual, interactive, and meaningful ceremony of Tashlich. Through music, prayers and poetry we will cast out what's weighing us down and make space for a wonderful new year together. *Duration: 45 minutes*

Ten Days of Teshuvah

(REPENTANCE)

There are ten days between Rosh Hashanah and Yom Kippur, a sacred stretch of time referred to as the Ten Days of Teshuvah (Repentance). These ten days are seen by many Jews as an opportunity for change through repentance, prayer, and charity. The famous religious poem, UnetanaH tokef, describes the opportunity to “avert the severe decree” by changing our minds, feeling regret and a determination to improve, and making an effort to repair our misdeeds.

However you choose to spend these ten days, we sincerely hope they are restorative and renewing. Here are a few opportunities to take part in communal rituals to enhance your spiritual journey.

SHABBAT SHUVAH

Friday, October 4

6 p.m. • Stiffman Sanctuary

Shabbat Shuvah falls between Rosh Hashanah and Yom Kippur. Shuvah comes from the Hebrew word “Teshuvah,” which is often translated as repentance but literally means “return.” Thus, Shabbat Shuvah is the Sabbath of Return. Our service is focused and meditative, highlighting themes of repentance and forgiveness.



SHABBAT SHUVAH AWE WALK

Saturday, October 5

9 a.m. • Powder Valley Nature Center

11715 Cragwold Rd, Kirkwood, MO 63122

In between Rosh Hashanah and Yom Kippur, join Rabbi Goldstein for a special Shabbat morning awe walk connected to our Days of Awe. The morning will include moments of learning, prayer, and reflection centered on themes of forgiveness and renewal. Details of the exact meeting place provided upon registration.

This event is free, but registration is required at sestl.co/shuvawe.



KEVER AVOT V'IMAHOT MEMORIAL SERVICE OF REMEMBRANCE

Sunday, October 6

5 p.m. • New Mt. Sinai Cemetery Mausoleum

New Mount Sinai Cemetery, Congregation Shaare Emeth and Temple Israel's joint cemetery, will present a Kever Avot v'Imahot service – A Memorial Service Honoring Those Who Came Before Us – in the cemetery's Community Mausoleum.

This service of remembrance is meditative and prayerful, providing comfort and solace for all. Led by clergy of the member congregations and musicians from the Saint Louis Symphony Orchestra and others, the service is both reflective and comforting. It is a beautiful way to transition from Rosh Hashanah to Yom Kippur and remember whose shoulders on which we stand.

OCTOBER 7TH COMMEMORATION

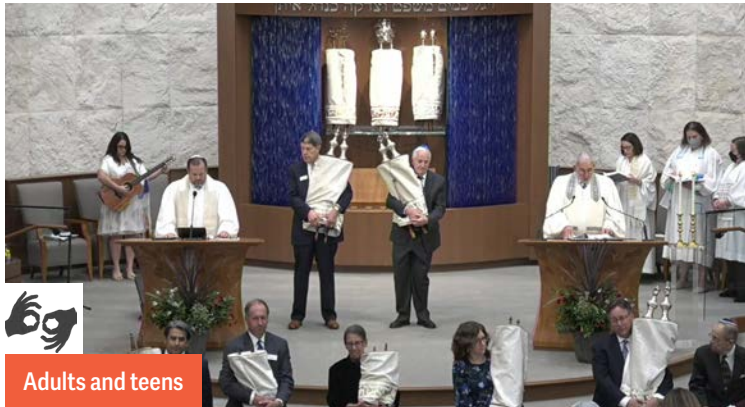
Monday, October 7

7 p.m. • Location TBA

Join us as the Jewish community of St. Louis gathers to honor the victims and heroes of October 7th. Doors open at 6 p.m. and registration is required. Watch ShaareMail for location & additional information to follow.



Yom Kippur



Adults and teens

KOL NIDRE: EREV YOM KIPPUR SERVICE

Friday, October 11

7:30 p.m. • Stiffman Sanctuary

This service features the haunting cello and piano composition of Kol Nidre by Max Bruch, our High Holy Day Choir, contemporary instrumental ensemble, beautiful readings, prayers, and a meaningful sermon. We will capture the significance of the holiest day in the Jewish year by reflecting, repenting, and renewing individually and as a community.

Duration: 2 hours



Children ages 0-7 and family

BOKER TOV YOM KIPPUR

Saturday, October 12

9 a.m. • Kehillah Center

Children ages 7 and under are invited to join Shaare Emeth clergy, Lucy Greenbaum, and more familiar faces for a Yom Kippur experience designed especially for our youngest friends and their families. We'll sing, dance, and learn about the true meaning of this important and holy day with the help of the emotional cast of characters from **Inside Out 2**.

Duration: 30 minutes



Adults and teens

YOM KIPPUR MORNING SERVICE

Saturday, October 12

10 a.m. • Stiffman Sanctuary

This service, accompanied by our High Holy Day choir, beautiful readings and prayers, and a powerful sermon, offers an opportunity for meaningful reflection and repentance. • Duration: 2 hours



Children ages 8+ and family

YOM KIPPUR L'DOR VADOR SERVICE

Saturday, October 12

11 a.m. • Kehillah Center

An interactive worship experience filled with music, blessings, and a story-based sermon. We'll explore the themes of the holiday in a relatable way, inspiring all in attendance to step into the new year with renewed purpose. • Duration: 1 hour

CHILDCARE AVAILABLE FOR AGES 6 MONTHS TO 7 YEARS • SEE PAGE 19 FOR DETAILS

 Service includes ASL interpretation.

Yom Kippur

YOM KIPPUR AFTERNOON

We invite you to make yourselves at home at Shaare Emeth throughout the day. In addition to the following programs, The Jewish Mindfulness Center of St. Louis will be open all afternoon as an oasis of quiet where you can rest, meditate, or pray. You may also wish to spend time at the Labyrinth (information about how to use the Labyrinth as a spiritual practice will be available) or walking the grounds.



YOM KIPPUR POSTCARD PARTY

12:30–3:15 p.m.

We believe our democracy is strongest when every voice is heard, and every vote is counted. As the election draws near, Shaare Emeth's Voting Rights Committee is in the final stretch to send at least 3,000 postcards to under-represented voters in specific states in partnership with the Center for Common Ground's Reclaim Our Vote (ROV) Campaign and the RAC (Religious Action Center). Help us reach our goal! *We'll provide instructions, postcards, scripts, and labels.*

Additional offerings for Yom Kippur afternoon to be announced in ShaareMail.



Labyrinth



YOM KIPPUR TEEN EXPERIENCE

12:30–1:45 p.m. • Kehillah Center

In recent years, our teens have planned and led a service on Yom Kippur afternoon, mostly attended by their friends and family. While we love seeing our teens lead, this year we felt the need to give these young people a more introspective space to gather and process the holiest day of the year. So, rather than a service led by teens, Helena Cooper and Rabbi Rachel Bearman will host a Yom Kippur Experience FOR teens in grades 7–12.



YOM KIPPUR YIZKOR HEALING NEILAH SERVICE

Saturday, October 12

3:30 p.m. • Stiffman Sanctuary

Our closing service includes three elements: **Yizkor** - time dedicated to the memories of loved ones whom we have lost; **Healing** - prayers and music that help us connect with a sense of wholeness amidst a broken world; and **Neilah** - our concluding service, reminding us of the power of our promises as we prepare to step joyfully into the new year.

Following the service, enjoy a sweet gift with our wishes for a sweet and healthy new year. • *Duration: 2 hours*

Sukkot

EREV SUKKOT: PIZZA IN THE HUT

Wednesday, October 16

6–7 p.m. • Courtyard Sukkah

The congregation is invited to join our Midweek Religious School families for Pizza in the Hut and blessings in the Sukkah to welcome Sukkot.



L'DOR VADOR S'MORE SUKKOT!

Friday, October 18

5:15 p.m. Sukkot Snacks (Nosh) and Activities for All Ages

6 p.m. Sukkot Shabbat Service in the Stiffman Sanctuary

Our Traditions with a Twist committee is excited to help us celebrate Sukkot and Shabbat with an extended nosh and activities for all ages before worship. Our L'Dor VaDor Intergenerational Kabbalat Shabbat Service will include October Blessings (birthdays & simchas) and added prayers and readings for Sukkot.



But don't leave after the service... There's S'more!

Come on out to the courtyard for s'more fun, including roasting marshmallows around the fire.

Watch ShaareMail for more information.

ORDER YOUR LULAV & ETROG SET

Enjoy Sukkot with your own lulav and etrog. No sukkah required to bring the smells and sounds of Sukkot into your home. Support the independent farmers in Hadera, Israel who grow the etrogim (plural of etrog). Parts of the lulav are grown in Egypt and other parts in New York. One set costs \$38. **Order by September 23 at sestl.co/lulav**

INTERESTED IN
HAVING A LULAV
AND ETROG TO
CELEBRATE SUKKOT
WITHIN YOUR HOME?

**Order yours by
September 23
at sestl.co/lulav.**



Simchat Torah

EREV SIMCHAT TORAH WORSHIP

Wednesday, October 23

6 p.m. • Service in the Stiffman Sanctuary

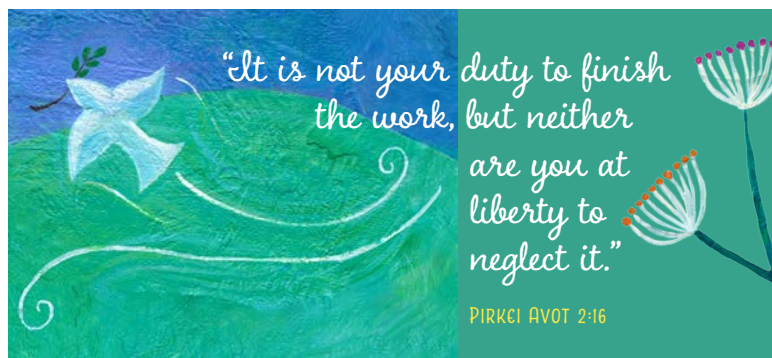
Let us rejoice together as we complete the yearly cycle of Torah reading and begin again. Our 5785 service will also carry the memory of what occurred on Simchat Torah 5784, one year ago. While we sit with our grief and all that has transpired since, we will also strive to joyfully fulfill the mitzvah of singing and dancing with the Torah on this holy day.

SIMCHAT TORAH YIZKOR

Thursday, October 24

9 a.m. • B'nai El Chapel

Jewish mourning is both a private and public practice, and Yizkor services are public observances for the community of the bereaved. Yizkor means "may God remember" and it is recited four times a year on Yom Kippur, Simchat Torah, Passover, and Shavuot. All are welcome to join us for this service in memory of our loved ones, this year with a special remembrance for the victims of October 7th and the subsequent war.



PLEASE CONSIDER A CONTRIBUTION TO OUR 2024 ANNUAL APPEAL

After a successful first year of going green and primarily sending out letters electronically, we're continuing with appealing to you via e-mail this year. Please watch for your Annual Appeal e-mail later this month. We hope you will be here for Shaare Emeth and contribute a meaningful gift in honor of this year's High Holidays.

To make your gift now, please visit

sestl.co/give

or scan the QR code.

Thank you for your generosity.

Questions? Contact Beth Kodner at 314-692-5306 or bkodner@sestl.org



HIGH HOLIDAY FOOD DRIVE AND TZEDAKAH

The Prophet Isaiah teaches, "This is the fast I desire...it is to share your bread with the hungry." Congregation Shaare Emeth will collect nutritious canned or non-perishable foods during the High Holidays. Supplies will go to The Harvey Kornblum Food Pantry.

Monetary donations are also welcome in cash or checks payable to "Shaare Emeth Food Drive," or **donate online at sestl.co/hhdtzedakah**. The donations will benefit the St. Louis Food Bank, The Harvey Kornblum Food Bank, and Mazon, A Jewish Response to Hunger.

Food donations can be brought with you to services during Rosh Hashanah and Yom Kippur or Monday–Friday, October 2–12.

FOOD DRIVE VOLUNTEERS NEEDED

Volunteers of all ages are needed to box food collected at the High Holidays. Watch Shaare Mail for the sign-up link.

Most-Needed Items

1. Canned Tuna Fish and Canned Chicken
2. Kosher Non-Perishable Foods
3. Canned Fruit (any kind)
4. Macaroni and Cheese
5. Healthy Soups
6. Canned Vegetables (e.g. corn, green beans, peas, carrots)
7. Peanut Butter & Jelly
8. Personal care items such as Paper Towels, Laundry Detergent, and Dish Soap



Tishrei Events

OCTOBER

TUE

15 & 22 WHEN ALL YOU'VE EVER WANTED ISN'T ENOUGH

10 A.M. • LIBRARY CONFERENCE RM

TEXTING TUESDAYS: A SUKKOT STUDY OF THE BOOK OF ECCLESIASTES

Join **Rabbi Andrea Goldstein** for a survey of the modern wisdom found in the ancient scroll of Ecclesiastes. Weather permitting, session two will take place in the Sukkah.

Register at sestl.co/text

TUE

15 MAHJ IN THE SUKKAH

1 P.M. • NORTH LOBBY, COURTYARD

Join other Shaare Emeth mahjong players for an afternoon of fun in the courtyard sukkah or North Lobby. Treats will be served. Players of all levels are welcome!

RSVP at sestl.co/mahj



WED

16 CONTEMPORARY JEWISH WRITERS

11:30 A.M. • LIBRARY CONFERENCE RM

8-WEEK SESSION: OCT. 16-DEC. 11

With **Marcia Moskowitz** • Each of the novels we'll read this session, two Israeli and one British, explores the ramifications and complexities of family relationships and the discovery of self in the contemporary societies of California. Tuition is \$136. **Register at sestl.co/cjwfall24**

FRI

18 TO EVERYTHING TURN, TURN, TURN: TISHREI MINDFUL MOVEMENT

10 A.M. JEWISH MINDFULNESS CENTER

Join **Dani Glassman**, LMT, RYT-500, MSW, and **Rabbi Goldstein** for this unique offering combining gentle movements and ancient teachings to help us embody two of Sukkot's most important values – gratitude and joy.

Register at sestl.co/tishreiyoga

SAT

19 JUBILATION!

See Page 20



MON

21 KESHER'S FALL DINNER

7 P.M. • LOCATION TBA

The women of Shaare Emeth are invited to attend KeSHER's Fall Dinner! Watch your e-mail for more information and the link to RSVP.

Not sure if you're getting KeSHER's emails? Contact Stacy at SJespersen@sestl.org

TUE

29 HEBREW UNPLUGGED: ENTERTAINING INSIGHTS & COOL CONNECTIONS

10 A.M. • LIBRARY CONFERENCE RM

TEXTING TUESDAYS: WHERE JEWISH LEARNING COMES ALIVE

With **Debbie Bram** • Why is Hebrew read right to left? Learn fascinating connections between different Hebrew words. You do not need to be able to read Hebrew to take this class.

Register at sestl.co/text



More Information

For Those Attending On-Site

CHILDCARE AVAILABLE

Congregation Shaare Emeth is pleased to be able to offer childcare during Rosh Hashanah & Yom Kippur morning services.

- **Who:** Children ages 6 months – 7 years
- **When:** Thursday, October 3 and Saturday, October 12 from 9:30–12:30 p.m.
- **Where:** Drop-off and pick-up in the preschool hallway
- **Cost:** \$5 per child per holiday
- **Registration:** Advance registration is required. **Space is very limited so register early!** Registration opens for Shaare Emeth members on **September 3** and for the **public on September 10**.

Register at sestl.co/care24

For more information, please contact

Emily Cohen at ecohen@sestl.org or 314-692-5323.

PARKING LOCATIONS & SHUTTLE

In the event our lot fills, overflow parking and shuttles are provided.

Plan to arrive early to allow time to park or relocate to overflow parking and take the shuttle.

Overflow Parking Locations:

Elks Lodge #9, 12481 Ladue Road

Medical Offices, 456 and 522 N. New Ballas Road

- Erev Rosh Hashanah, October 2 from 6:30 p.m. – Medical Offices
- Rosh Hashanah, October 3 from 8:30 a.m. – Elks Lodge #9
- Erev Yom Kippur, October 11 from 6:30 p.m. – Elks Lodge #9
- Yom Kippur, October 12 from 8 a.m. – Medical Offices

LIVING OUR VALUES: WELCOMING ALL

At Congregation Shaare Emeth, we are so pleased to invite you to join with us to usher in the year 5785. It is our tradition to extend the warmest possible "Welcome!" as we open our doors to all who wish to join us during the High Holidays and throughout the year.

All members of the Congregation and all guests and visitors are welcome to join us for our services; no tickets are necessary.

For Those Attending Online

PRAYERBOOK PICK-UP

The beloved Mishkan Hanefesh Machzor two-volume set will again be our prayerbook companion for Rosh Hashanah and Yom Kippur. If you are planning to attend services by live-streaming, you may borrow prayerbooks to use at home. Get your set(s) at one of the pick-up times listed below. They are due back before Monday, October 21.



At pick-up, you will be asked for your credit card number and, if your books are not returned by Monday, October 21, you will be charged \$50. No credit cards will be processed before October 21.

Pick-up Dates & Times in the North Lobby

- Friday, September 27: 10 a.m. – 1 p.m.
- Monday, September 30: 10 a.m. – 1 p.m.
- Tuesday, October 1: 4 p.m. – 7 p.m.
- Wednesday, October 2: 9 a.m. – Noon

LIVE STREAMING

Congregation Shaare Emeth is proud to offer online viewing options for all of our High Holiday services again this year.

The only link you need is

sestl.co/stream

Bookmark it for easy access, even year-to-year!

If at any time you're experiencing difficulties accessing the livestream:

- Wait a few minutes and try reloading the page
- Try sestl.co/boxcast or sestl.org/upcoming-services
- Call the temple office at (314) 569.0010 for assistance

CONGREGATION SHAARE EMETH PROUDLY PRESENTS

JUBILATION!

A NEW
HEART & Soul
CELEBRATION

ON

SATURDAY
OCTOBER 19

AT

THE
REVERIE
IN CHESTERFIELD

FROM 6:30-9:30 P.M.

YOU'RE INVITED...

Join us during the Sukkot festival for a joyous evening of cocktails, gourmet hors d'oeuvres, Havdalah, program, awards presentation, and dancing

BENEFITING THE MISSION OF



OUR
2024
**HARRIS
FRANK
COMMUNITY
SERVICE AWARD**

HONOREES ARE
**DEBBIE & MIKE
LEFTON**



Debbie & Mike Lefton have been engaged members of Shaare Emeth and the broader St. Louis Jewish community for many years. They expertly contribute their time and talents in numerous ways, demonstrating unwavering commitment to children, education, Jewish engagement, health, Israel, and philanthropy.

Highlights of their involvement include Debbie serving as the President of Shirlee Green Preschool's Parent Advisory Council (PAC) and Mike as our congregation's Board President. Mike is currently Board President of Variety Children's Charity of St. Louis and Regional President of the American Jewish Committee (AJC) St. Louis, and he is the Immediate Past President of the St. Louis Men's Group Against Cancer. Debbie is a member of The St. Louis Jewish Light board and the St. Louis Children's Hospital Friends Board, she served on the Camp Rainbow Board of Directors for 28 years, and she has chaired and participated in numerous committees at the St. Louis Jewish Community Center and St. Louis Jewish Federation.

The Shaare Emeth community is honored to celebrate Debbie and Mike Lefton for their dedication and impactful contributions to our community and beyond. **Read more about the Leftons at sestl.co/jubilation.**

**THANK
YOU**
TO OUR
**CELEBRATION
COMMITTEE**

CO-CHAIRS

Barbie Barenholtz-Present & Ron Present
Cindy & Danny Solomon

COMMITTEE

Amy Bennett	Bill Livingston	Susie Sachs
Dick Brickson	Beth Manlin	Johanna Schillinger
Robin Brody	Sue Matlof	Judy Schwartz Jaffe
Michele Bernstein	Michelle Novof	Heidi Seigel
Patty Croughan	Rachel Pereles	Jill Solomon
Lisa Gubernik	Michelle Rubin	Lisa Suffian
Hillary Hinz	Betsy Rudolph	Sharon Tureen
	Jonathan Sachs	Jody Waldman

STAFF LIAISONS: Robert Colton, Valerie Cundy, Beth Kodner, Hannah Michelson, & Craig Neuman

**FOR TICKETS, TRIBUTES, & SHAARE
THE LOVE DONATIONS, VISIT
SESTL.CO/JUBILATION**

Congregation Shaare Emeth is Approved to Sponsor a Refugee Family

At its June 25, 2024 meeting, Shaare Emeth's Immigration Advocacy and Action Committee (IAAC) recommended that Congregation Shaare Emeth sponsor a third refugee family through HIAS's (Hebrew Immigrant Aid Society) Welcome Corps. HIAS has approved our sponsorship of a family of four and we have received money from "The Welcome Corps Sponsor Fund," a national program which will cover the minimum amount of monies that the Federal government feels is required to help the family get started.

In mid-August, we were matched with a family from Sudan - a mother, father, and two daughters, ages 8 and 5.

We are thrilled to announce that our congregant, Melissa Lynn Pomerantz, will chair the sponsor circle. Melissa is joined by the following congregants:

- Co-Chairs of Basic Necessities: Judy Willett & Julie Winkle
- Chair of Housing: Marti Zuckerman
- Chair of Documentation, Services & Benefits: Michelle Gralnick
- Chair of Education: Joelyn Levy
- Chair of Legal Assistance: Sharon Remis
- Co-Chairs of Transportation: Jodi & Jeff Miller
- Coordinator of Volunteers: Debra Baker
- Chair: Melissa Lynn Pomerantz

In the spirit of kindness and hospitality, we invite you to join us in making this family feel at home in our community. There

Postcard Parties at Home

We need your help sending 3,000 postcards by October to under-represented voters in partnership with the Center for Common Ground's Reclaim Our Vote (ROV) Campaign and the RAC (Religious Action Center). We have packets of 30 postcards for you to take home and return to Temple. We provide instructions, postcards, script, and labels. Currently we are writing postcards to underrepresented voters in Georgia, Texas and Florida.

Packets can be picked up in the main office and must be returned by September 25.

Brought to you by Voting Rights Committee: Ann & Ashley Loiterstein and Holly Bernstein, Co-chairs; Ronnie and Allen Brockman, Wendy Flusser, and Debby Price; Debbie Bram, staff

For questions, email Ann or Ashley Loiterstein at amloiter@gmail.com.

Ways to Volunteer

- Driving
- Help setting up the apartment
- Taking family shopping
- Helping with schoolwork
- Taking family on outings, for example to the zoo
- Assisting adults with learning English

are many ways you can help — offering your time, resources, or simply sharing a warm smile. There will be many ways for YOU to be involved.

Please email Debbie Bram, Director of Jewish Life and Learning, at dbram@sestl.org if you are interested in volunteering.

Our congregation has sponsored two families in the past: the Ebrahimi Family and the Hashimi Family. Our formal sponsorship of the Ebrahimi Family ended in early August. The Hashimi Family (who we worked with in partnership with Parkway UCC and TASOM) moved to California to be closer to relatives before our formal time with them was finished. HIAS was so moved by our work with the Hashimi family that they filmed our congregation's story and share it online on their website in order to inspire other congregations to get involved. **Watch the video at <https://hias.org/news/watch-three-faiths-one-family>.**

The most up to date information about the family can be found in Shaare Mail, our weekly e-blast. The importance of welcoming the stranger is a theme that resonates deeply, mentioned 36 times in The Torah, and it is our privilege to heed this call.

COLLEGE CONNECTION



SIGN UP TODAY & HELP US STAY CONNECTED WITH OUR COLLEGE-AGE MEMBERS!

A Wealth of Welcoming

We are excited to welcome everyone to the 2024-2025 Religious School year!

If you haven't yet registered your children for this incredible year of joyful, relevant Jewish learning, there's still time.

Visit sestl.co/rs to register.

Please complete your enrollment as soon as possible so we can include your student(s) as we plan for the year and make class placements.

There are many fabulous opportunities awaiting families this year:

Shir Emeth Youth Choir

If you have a young one who likes to sing, definitely sign them up for Shir Emeth Youth Choir led by Lucy Greenbaum, Director of Music Engagement. No experience is necessary. Every 2nd – 6th grader is welcome.

Details can be found at sestl.co/shiremeth.

JQuest Family Retreat

We are also looking forward to the Family Retreat for JQuest Kindergarten and Second Grade families on September 22.

Welcome Ziv, and Welcome Back Rabbi Lori!

At the end of August, Ziv Shalev joined our community as our new Israeli Shinshin. He is eager to meet all of you and we're looking forward to learning with him all year long.

We are especially excited to welcome back Rabbi Lori Levine from the first part of her parental leave. Rabbi Levine and her husband, Joe Ferris, became parents of the beautiful Bernard (call me Bernie) Louis Ferris. Bernie, parents, and big brother Teddy are all doing well, and Rabbi Levine can't wait to see all the amazing Religious School families for the first day of school!

If you have any questions about religious school or how your family can participate in all Shaare Emeth offers, please feel free to reach out!

The Religious School Team

Save the Date for Your First Day of Religious School!

Sunday, September 8: First Day for PreK-6th Grade

Sunday, September 15: First Day for Tikkun (8th, 9th, 10th Grade)

Sunday, September 15: First Day for Extended Day

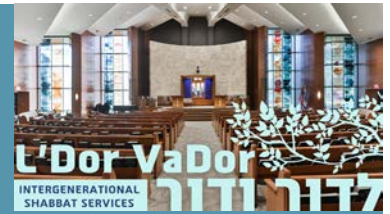
September 16, 17, 18: First Days for Midweek & BMA

Back-to-School L'Dor VaDor Shabbat

**Friday, September 6
Nosh 5:15 p.m., Service
6 p.m. in the Stiffman Sanctuary**

Students and educators at any school (including religious school!) are invited to celebrate the start of a new school year with a special blessing and a sweet treat during the L'Dor VaDor service. L'Dor VaDor Shabbat services are intergenerational, full of music and meaning, and brief (we are usually done by 7:05).

We look forward to celebrating you and another fabulous year of learning!



Welcome to the World

Bernard "Bernie" Louis Levine Ferris
Born Wednesday, July 17

Mazel Tov Rabbi Lori Levine, Joe Ferris, and big brother, Teddy!

Thanks for another **GREAT SUMMER!**



Jews By Choice - Let's Build Community!

By Rabbi Rachel K. Bearman

RBearman@sestl.org

As a rabbi, I have the profound honor of supporting people who are choosing to become Jewish. Over the months (and sometimes years) that I work with conversion candidates, I learn so much about their unique journeys, and I help them explore the reasons that they want to become a Jewish person. Some conversion candidates have known since childhood that Judaism was their destiny. Others have had recent experiences that motivated them to explore something new.

Each Jew By Choice (JBC) has a unique path to Judaism, but, despite their varied journeys, every person that I've worked with has shared some version of the same wish:

- I would love to meet other people who are converting or who have converted to Judaism.
- In order to meet this need and help JBCs build community, Shaare Emeth will be organizing JBC dinners several times throughout the year!
- Each JBC Dinner will take place at a fun and delicious restaurant and will be co-hosted by two JBCs from our Shaare Emeth community. At these dinners, "veteran" and "newbie" JBCs will come together to share experiences, trade helpful suggestions, meet people that they can sit with at services, and-most importantly- make new friends.

Our first JBC Dinner will be co-hosted by Nancy Taxman and Carlee Ayers-Schalk. We'll gather at Fallon's Irish Bar & Grill

(Olivette Location) on 9/22 at 6:30 pm. JBC Dinners are open to anyone connected to Shaare Emeth who has converted or is in the process of converting to Judaism.

RSVPs are required. Please use the QR code below to let us know that you're coming! If you have any questions, please reach out to me at RBearman@sestl.org.

JEW'S BY CHOICE (JBC) DINNER

SEPTEMBER 22ND 6:30PM

FALLON'S IRISH BAR & GRILL - OLIVETTE LOCATION



Shaare Emeth community members who have converted or are in the process of converting are invited to join us for our first JBC dinner.
Let's build community and enjoy a delicious meal!



RSVP TODAY!



(Re)Introducing Our (Very First) Director of Youth Engagement



Hello, Shaare Emeth family! My name is Helena Cooper, and I am Shaare Emeth's new Director of Youth Engagement. For those who I haven't had a chance to meet yet, I grew up in Orlando, FL where my temple was my whole life, and then moved to St. Louis in 2018 to attend SLU. I started working at Shaare Emeth with Camp in

2020, then I joined our Religious School faculty in 2021, and eventually started working with our youth groups in 2022. My full-time job began officially on July 1. I love being a part of

Shaare Emeth, and particularly seeing the impact our youth can have on our temple and the St. Louis Jewish community.

After an exciting summer with Camp Emeth, I am thrilled to be jumping into planning youth group events, working in our Religious School, and building relationships within the community. Please be on the lookout for ways your kids can be involved with Shaare Emeth, and as always, please reach out to me if you have any questions!

You can reach me at HCooper@sestl.org. I'm looking forward to a very exciting and meaningful year ahead.

AN UPDATE ABOUT MEMBERSHIP

It's almost time for Membership Responsibility (MR) for 2025. Each fall, members confirm their MR pledge for the coming calendar year. Check your email later in October for details.

Please note payment plans for Membership Responsibility must be renewed each year. To help explain your choices for financial support of Shaare Emeth, here is more information about our options:

Membership

Membership Responsibility (MR) is a yearly financial donation each family contributes to sustain day-to-day operations of the temple. It is a collective responsibility that allows Shaare Emeth to remain strong and accessible to all. Families choose the amount they give for MR each year.

Shaare Emeth's leadership does establish a "sustaining amount" based on the average expense of running the synagogue per family. We encourage families who can afford to give the sustaining amount to do so as it allows our congregation to maintain a high level of clergy, staff, and programming. In 2025 the sustaining amount for Membership Responsibility is \$3,380. However, we are proud that our model allows congregants to commit within their financial means.

Ner Tamid Society

AT CONGREGATION SHAARE EMETH

A total Membership Responsibility commitment of at least \$500 above the sustaining Membership Responsibility level of \$3,380 allows your family to become members of the Ner Tamid Society. This giving opportunity starts at \$3,880.

The flame of the Ner Tamid – the eternal light in our Sanctuary – symbolizes God's presence in our lives. By being a member of the Ner Tamid Society, you play a crucial role in our ability to tend to this flame now and for generations to come.

Level	Total Membership Responsibility Gift
Flame of Honor	\$3,880
Flame of Gratitude	\$5,380
Flame of Joy	\$7,380
Flame of Goodness	\$10,380
Flame of Generosity	\$13,380

Emet Society

AT CONGREGATION SHAARE EMETH

For more than 150 years, our name, Shaare Emeth or "Gates of Truth" when translated from Hebrew, has served as our guiding light, our foundation. The word, Emet, or "truth," was selected to reflect the importance that these significant contributions will have, allowing us to maintain our traditions and innovate for the future, this year and for generations to come.

In addition to the Ner Tamid Society benefits, a unique benefit of the Emet Society is that these one-time yearly gifts are all-inclusive. Emet Society members are included as donors for all congregational fundraisers throughout the year.

Level	Total Emet Gift
Bronze	\$18,000
Silver	\$25,000
Gold	\$36,000
Platinum	\$50,000
L'Dor VaDor Total Intergenerational Family Gift of	\$50,000

For more information on any of these opportunities, contact Beth Kodner, bkodner@sestl.org or 314-692-5306.

WELCOME, NEW MEMBER FAMILIES!

Dora and Maxwell Cohen

Stephanie and Daniel Fredman

Jill Kogan and Josh Beaman-Kogan,
with children, Ezra and Ruthie

Sarah Weinman, with child, Harry

UNsung HEROES

Mazel Tov to Wendy Flusser,
Barb & Rich Kramer, Linda
Sandmel, and Sharon Weissman on
their recognition as 2024 Unsung
Heroes by the St. Louis Jewish Light.

SIMCHAS

Mazel Tov to **Ron Cytron** who received the Volunteer of the Year Award from the Ladue School District Board of Education. Ron has been sharing his musical talents with the district for over 25 years by playing piano and guitar to accompany Conway, Old Bonhomme, and Reed elementary schools students.

Mazel Tov to **Marcia and Steven Feit** on the birth of their grandson, **Harlan Olkes**. Proud parents are **Jeremy and Casey Feit**, along with his big brother **Rainer Leo**.

Mazel Tov to **Anne Gelfer**, daughter of **Louise and Rick Rovak**, who earned 14 Telly Awards at Northwestern Medicine, and an additional seven were awarded to Anne and her team. The Telly Awards honor excellence in television & video across all platforms; over 12,000 entries were submitted globally from six continents & all 50 states.

Mazel Tov to **Jed Henderschedt**, grandson of **Louise and Rick Rovak**, who was recently commissioned as a 2nd Lieutenant in the Marines upon completing his degree in Political Science and Chinese at the US Naval Academy in Annapolis, MD.

Mazel Tov to **Carly and John Hildreth** on the birth of **Archie Lee Hildreth**, and to big siblings **Olive and Lincoln**. Mazel Tov also to grandparents **Eve and Don Rudolph**. Archie is the great-grandson of the late Ethel and Jerry Lerner.

Mazel Tov to **Stephanie and Ramin Lalezari** on the addition of their daughter, **Maya Arielle**. Congratulations to big sister, **Talia Shay**, and grandparents, **Marcia and Steven Feit**.

MAZEL TOV TO OUR SEPTEMBER AND OCTOBER B'MITZVAH STUDENTS!



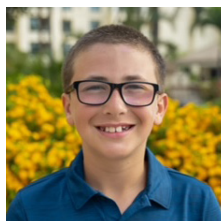
Alex Fine,
child of Amy
and Jason Fine



Joshua Horwitz,
child of Julie and
Joseph Horwitz



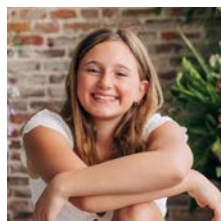
Lucas Lazarus,
child of Julie and
Todd Lazarus



Matthew Virgin,
child of Stefanie and
Christopher Virgin



Miriam Wallace,
child of Elizabeth
and Brad Wallace



Naomi Sherman,
child of Jane and
Seth Sherman



Olivia Esses,
child of Stephanie Esses
and Julia Partin

We express condolences to Shaare Emeth members and families who have recently lost a loved one and sympathy to Shaare Emeth members who have had a death in their extended family.

CONDOLENCES

Dr. Benjamin Borowsky
Husband of Radine Borowsky

Harvey Gershenson
Father of Beth (Mark) Manlin

Gail Glaser

Rochelle Goldman
Sister of Steven Goldman

Carole Harris

Jackie Kasnetz

Craig Mold
Husband of Judith Mold and
sister of Sharon Barnholtz

Renee Nerviani
Wife of David Nerviani and
sister of Steve (Judy) Kaufman

Sylvia Permuter

Ronald Schwartz
Husband of Gloria Schwartz
and step-father of Melanie
(Barry) Goldstein

SYMPATHY

Mark (Jodi) Blucher on the death of
his father, **Stephen Blucher**

Carol (Robert) Fischer on the
death of her parents, **Nancy and
Everett Kling**

Heather (Jake) Lampert on the
death of her father, **Leo Saltzman**

Leslie (Steve) Masaki on the death
of her mother, **Barbara Weil**

**Randy (Adrienne Eagles-Mellovitz)
Mellovitz** on the death of his brother,
Rick Mellovitz

Linda (Mark) Pearl on the death of
her father, **Ronald Sandler**

Jacob (Laura) Rosen on the death of
his father, **Skip Rosen**

PERPETUAL MEMORIALS

A memorial has been established for:

Judy Brandvein
Established by John Brandvein and
The Brandvein Family

Gilbert Hoffman
Established by Stuart Hoffman,
Marla Blanton and Wayne Hoffman

Bernard Salky
Established by Kenny and
Molly Salky

Names of those remembered by a Perpetual Memorial are read during Friday Shabbat Services. They will also be remembered by yahrzeit date reminders sent to designated family members' homes and are automatically included with the Perpetual Memorials in our memorial book on Yom Kippur. For more information on establishing a Perpetual Memorial, contact Stacy Jespersen at SJespersen@sestl.org or 314-692-5302.



Weekly Yahrzeit listings can be found online at sestl.org/yahrzeits.

NEW MT. SINAI
CEMETERY & MAUSOLEUM
EST. 1850

Serving
Shaare Emeth
Since 1869

St. Louis' beautiful and historic Jewish cemetery
NewMtSinaiCemetery.org | 314-353-2540

Providing
traditional, dignified
funeral services

At the time
of your need,
or pre-arranged

Rindskopf - Roth
FUNERAL CHAPEL
(314) 367-0438

AL & EVA FLEISCHER HEALING FUND

IN MEMORY OF:

Myron Taich
Barbara Taich

SAM I. GOLMAN ISRAEL FUND

IN MEMORY OF:

Rose Brodsky
Bruce, Elaine, and Stephanie Brodsky
Gilbert Hoffman
Sherri & Bob Daniel

SHIRLEE GREEN PRESCHOOL FUND

IN MEMORY OF:

Judy Brandvein
Hannah & Larry Langsam

RUBIN & ROSE HERSCH AND JERRY & JOYCE SWEDROE FUND FOR SAFETY AND SECURITY

IN MEMORY OF:

Michael Cohen
Madeleine Elkins & Harvey Wallace

LOUIS & PAULINE KRASNER JQUEST AT SHAARE EMETH FUND

IN APPRECIATION OF:

Betsy & Ron Cytron for their kindness and generosity during a difficult time
Laura & Jonathan Fleischmann

IN HONOR OF:

Rabbi Lori Levine, Joe, and Teddy Ferris on the birth of Bernard "Bernie" Louis Levine Ferris
Dana & Vince DeBlasi

BUDDY & HADASSAH LEBMAN/ MOSHE FUND FOR SHINSHINIM AND ISRAEL ENGAGEMENT

IN HONOR OF:

Terry & Rick Bernstein on the recent births of a granddaughter and a grandson
Susan & Alan Witte

IN MEMORY OF:

Brian Honigbaum
Janet Ayelet Goldman

DOROTHY LEVITT/BIRDIE FURSTENBERG SUPPORT STAFF FUND

IN MEMORY OF:

Ronald Schwartz
Sharyn Levitt; Rosalie & Bob Stein

LIBRARY FUND

IN HONOR OF:

Marty Lipsitz on his special 90th birthday
Gail & Charles Eisenkramer
Marcia & Carl Moskowitz on their 65th wedding anniversary
Wendy Flusser

Marilyn & Gary Ratkin on the graduations of four of their grandchildren
Beverlee Sagel

IN MEMORY OF:

Myron Taich
Laura & Peter Jeanmougin

LISA'S STAR FUND FOR CAMP EMETH

IN MEMORY OF:

Ricky Pollock
Linda & Ed Dahl
Ronald Schwartz
Jessica & Jeffrey, Eliana, and Gabriel Wax

LIVINGSTON/ GROSSMAN YOUTH ENGAGEMENT FUND

IN MEMORY OF:

Jerri Livingston
Marsha Grazman; Ellen Livingston & Ed Levitt; Ellen & Graham Moses; Barb & Meryle Rosenfeld

STANLEY LYSS & ESTHER LYSS-GREENSTEIN LIFELONG LEARNING FUND

IN APPRECIATION OF:

The Clergy of Shaare Emeth for years of studying with us
Wednesday Torah Study/Texting Tuesday Group

IN HONOR OF:

Lynn Lyss on her special birthday
Pamela, Jason, Julie, Sheryl Paul, and children
Marcia Moskowitz on her special birthday
Lois & Dave Zuckerman
Marcia & Carl Moskowitz on their 65th Wedding Anniversary
Dianna & Dick Fine; Mary Kay Wolfe

IN MEMORY OF:

Michael Cohen
Lynn & Dr. Carl Lyss
Roxanne Harris Frank
Lynn & Dr. Carl Lyss
Harvey Gershenson
Lynn & Dr. Carl Lyss
Warner Isaacs
Lynn & Dr. Carl Lyss
Paul Lyss
Lynn & Dr. Carl Lyss

Edwin Pepper

Lynn & Dr. Carl Lyss
Vida "Sister" Prince
Lynn & Dr. Carl Lyss
Ron Sandler
Lynn & Dr. Carl Lyss
Ruth Siteman
Lynn & Dr. Carl Lyss

MANN FAMILY HUNGER FUND

IN MEMORY OF:

Robin
Nancy Bernstein
Anna Fox
Elaine & Kenneth Fox
Dr. Harold L. Levin
Linda S. Levin

MICHAEL MATLOF CONNECTION & COMMUNICATION FUND

IN HONOR OF:

Rabbi Lori Levine, Joe, and Teddy Ferris on the birth of Bernard "Bernie" Louis Levine Ferris
Carole & Jay Goldstein
Jamie Glaser on her adult
Bat Mitzvah
Sheila Cohen
Jeff Kaplan for a speedy recovery
Carole & Jay Goldstein
Rick Knox on his special birthday
Sue Matlof
Marty Lipsitz on his special birthday
Susan Rich and Harlan Rich; Sue Matlof & Howard Kaplansky
Mimi & Gary Matlof on their 50th wedding anniversary
Sue Matlof, Howard Kaplansky, and Greg Matlof
Marcia & Carl Moskowitz on their 65th wedding anniversary
Carole & Jay Goldstein
Karen Stern on her special birthday
Sue Matlof
Bob Summers on his special birthday
Sue Matlof
Wilma & Harvey Gerstein on the marriage of their grandson Ryan Meltzer to Elizabeth Fine
Wendy & Sanford Wax
Barry Worth for a speedy recovery
Carole & Jay Goldstein

IN MEMORY OF:

Susie Bernstein
Fran & Chuck Mannis; Sue Matlof
Michael Cohen
Ellanie Balber; Sandy & Ken Birenbaum; Lorry Blath; Ronnie & Allen Brockman; Judy & Larry Deutsch; Jan Fishman; Arlene Goodman; Doris Holtzman; Sandy Kaplan; Jackie & Marty Lipsitz; Bill Livingston; Dee Dee & Leonard

Lowland; Beth & Mark Manlin; Susan Rich; Johanna & Bob Schillinger; Iris P. Shepard; Marian Steen & Rick Knox; Rosalie & Bob Stein; Harriet Summers & Allen Sherman; Susan & Alan Witte

Harvey Gershenson

Sue Matlof
Max Kornblet
Janet Loiterstein
Mike Matlof
Ronnie & Allen Brockman; Dee Dee & Leonard Lowland; Susan Rich

Eugene Multin

Leslie & Ben Lofink
Ronald Schwartz
Sharee & Mark Feldman; Carole & Jay Goldstein; Sue Matlof; Wendy & Sanford Wax

DONNA MEYERS CHILDREN'S BOOK NOOK FUND

IN HONOR OF:

Linda Yatkeman on her special birthday
Roberta & Maury Goldfeder

AUDREY MONTAGUE PRESCHOOL OPERATIONS ENHANCEMENT FUND

IN MEMORY OF:

Margie Buxner
Debbie & Bob Ahrenholz; Bobby & Becky Vesper Goldberg

OPERATIONS ENHANCEMENT FUND;

IN HONOR OF:

Edith & Bob Prywitch on their special wedding anniversary
Mark Margolies

IN MEMORY OF:

Michael Cohen
Sharon & Richard Cohen; Brenda & Joe Pereles
Harvey Gershenson
Sandy & Ken Birenbaum; Sharon & Richard Cohen; Brenda & Joe Pereles; Renee & Sam Silverstein; Sue Wallach and Family
David Glazer
Linda Edelman & Irv Bernhardt
Brian Honigbaum
Rosalie & Bob Stein
Frieda M. Kreisman
Diane & Robert Kreisman
Tobie Liebert
Sue Ellen & Larry Maneson
Larry Machtinger
Linda Edelman
Lawrence G. Schermer
Karen Schechter & Alvah Levine and Family

Ronald Schwartz
Jill & Terry Chapin; Stacy & Jon Jespersen
 Jerry Seslen
Francine Seslen and Family
 Nancy Siteman
Brenda & Joe Pereles
 Edna & Louis White
Their Grandchildren

GARY & MARILYN RATKIN SOCIAL ACTION EDUCATION FUND

IN HONOR OF:
 Linda Sandmel on being the recipient of the Shaare Emeth Avodah Volunteer of the Year
Merle & Marty Oberman

IN MEMORY OF:
 Ronald Schwartz
Nancy & Harvey Lehrer

RELIGIOUS SCHOOL FUND

IN HONOR OF:
 Rabbi Lori Levine, Joe, and Teddy Ferris on the birth of Bernard "Bernie" Louis Levine Ferris
B'Yachad Rosh Chodesh Group

IN MEMORY OF:
 Brian Honigbaum
Debbie Sher
 Genevieve House
Eileen & Mort House
 Herbert House
Eileen & Mort House
 Marilyn Schear
Rob Loewenstein
 Ronald Schwartz
Marci & Ronn Diamond

SAM & GOLDBY ROSEN MUSIC FUND

IN MEMORY OF:
 Ruth & Ray Bialson
Julie & Ron Kramer
 Mollie Friedman
Rita & Barry Worth
 Ronald Schwartz
Bonnie & Steve Rosen;
Rita & Barry Worth

JOAN & HARRY SELTZER FAMILY FUND FOR IMPROVING WOMEN'S LIVES

IN HONOR OF:
 Joey Hoffman on his birthday
Joan Seltzer
 Mallory Schupp on her birthday
Joan Seltzer
 Mark Schupp on his birthday
Joan Seltzer
 Kevin Seltzer on his birthday
Joan Seltzer

IN MEMORY OF:
 Gilbert Hoffman
Teri & Harvey Brandvein;
Edythe Eisenberg; Randy & Jim Lyle;
Adam Mason and Gershman Mortgage;
Jodi Noble; Caryn & Bruce Sandweiss;
Jill & Mark Schupp and Family;
Cynthia & Garry Seltzer

FAYE & ROBERT SIEGEL SETYG PROGRAM FUND

IN HONOR OF:
 Marty Lipsitz on his special birthday
Cindy Platzer-Becker and Family

IDA STACK YOUTH SCHOLARSHIP FUND

IN MEMORY OF:
 Juanita Engel
Carol Lewis
 Ann Lewis
Carol Lewis
 Leon Herbert Lewis
Carol Lewis

RABBI JEFFREY B. STIFFMAN LECTURE FUND

IN APPRECIATION OF:
 Rabbi Stiffman for officiating at the funeral of Marilyn Reznik
The Family of Marilyn Reznik

IN HONOR OF:
 Marcia & Carl Moskowitz on their 65th Wedding Anniversary
Gail & Charles Eisenkramer

IN MEMORY OF:
 Stanley H. Bleiweiss
Diana Barnholtz and Family
 Donald Brasloff
Wende Stern, Harry & Molly Stern
 Dr. Harry Dalin
Debbie & Karl Guyer
 Ronald Schwartz
Diana R. Barnholtz; Phyllis Kahn;
Iris P. Shepard

STIFFMAN RABBINIC CHAIR FUND

IN MEMORY OF:
 Craig Mold
Cookie & Mike Fishman

TEMPLE ENDOWMENT FUND

IN APPRECIATION OF:
 Years of support from Congregation Shaare Emeth
Jane Krasnoff

IN MEMORY OF:
 Ronald Schwartz
Joy & Jay Liss

BETTY & BORIS TUREEN MEMORIAL EDUCATION FUND

IN MEMORY OF:
 Ronald Schwartz
Karen & Todd Siegel
 Rose Tureen and Boris Tureen
John Tureen

MARSHALL C. WEISMAN FUND FOR PRESCHOOL SPECIAL NEEDS CHILDREN

IN MEMORY OF:
 Edwin Pepper
Susie & Jeff Horowitz
 Marilyn Small
Susie & Jeff Horowitz

KATHY & MARTY ZIGLER FUND FOR ENRICHMENT OF PRESCHOOL TEACHERS

IN HONOR OF:
 Debi & Bob Feit on their special wedding anniversary
Susan & Neal Kalishman
 Judy & Keith Kaplan as they care for Judy's mother
Barb & Meryle Rosenfeld
 Debbie & Terry Taryle on their new home
Linda, Mike, Gregory and Alyson Adler

IN MEMORY OF:
 Gil Lewis
Barb & Meryle Rosenfeld

AV CLUB DONATION

Larry & Natalie Goldman; Richard & Sherri Goldman; James & Jane Grossman; Phyllis Kahn; Harvey & Leanne Schneider; Leonard and Sharon Smith

IN HONOR OF:
 Rabbi Lori Levine, Joe, and Teddy Ferris on the birth of Bernard "Bernie" Louis Levine Ferris
Arlene Goodman
 Jen & David Rosenblum and Family on Henry and Tyler becoming B'nai Mitzvah
Arlene Goodman

IN MEMORY OF:
 Ronald Schwartz
Arlene Goodman
 Gary Morris
Arlene Goodman

CARING TEAM DONATIONS

IN MEMORY OF:
 Harriet Harris
Marci & Jim Hennessy and Family
 Lenora Passer Sachar
Marie & Robert Kreisman; Karen & Andrew Loiterstein

Ronald Schwartz
Dana & Vince DeBlasi;
Sheldon & Anne Harber

JEWISH MINDFULNESS CENTER OF ST. LOUIS A DONATION

For Rabbi Goldstein and Eve Dyson for the Let It Ripple Series
Laurie Goldberg; Cheryl & Jonathan Maayan; Ellen Moses; Heather Peck; Anne Treger; Laura B. Tencer Vermeire
 To encourage the continuing work for innovative and reflective faith services
Joan McKerrow & Michael Rubin
 To support the innovative prayer services
Joan McKerrow & Michael Rubin

IN APPRECIATION OF:
 Rabbi Goldstein
Annie Gottesman

IN HONOR OF:
 Jamie Berzon on her conversion to Judaism
Elizabeth & Brad Wallace and Family

IN MEMORY OF:
 Michael Cohen
Bernice Carp

MITZVAH GARDEN DONATION

IN APPRECIATION OF:
 Rabbi Goldstein, Debbie Bram, staff, and volunteers for the community-wide Shavuot celebration
Arlene Goodman

PAC FUNDS

IN MEMORY OF:
 Noah Benjamin Kichura
Staci, Joey, and Seth Gerchen

SUPPORT OF THE EBRAHIMI FAMILY

IN HONOR OF:
 Debbie Bram on the engagement of Daniel Bram to Rachel Coleman
Andy & Stan Shanker

Joyce & Larry Kolker and Stephanie & Doug Kolker on the marriage of their granddaughter/daughter Dani Kolker to Mitchell Mai
Andy & Stan Shanker

2024 SECURITY INCOME

IN MEMORY OF:
 Mae L. Kessler
Ruth-Ellen and Steve Lichtenfeld

YOUTH SCHOLARSHIP FUND

Eliot M. Alport
Doris Alport



**BERGER
MEMORIAL**

Providing professional, compassionate care to the St. Louis Jewish community for more than 115 years.

**Richard W. Stein
Emily Stein MacDonald**
314-361-0622
bergermemorialchapel.com

**THOMPSON
COBURN LLP**



STEVEN B. GORIN
Thompson Coburn LLP
Attorneys at Law

314 552 6151
sgorin@thompsoncoburn.com

*Fellow, American College of
Trust and Estate Counsel*

*Estate and Tax Planning for
Business Owners and Individuals*

**BULLETIN
ADVERTISING**

Get eyes on your business by advertising in the Congregation Shaare Emeth Bulletin! As our primary publication, the Bulletin is printed and circulated to:



1,650+ Homes

A LOCAL AUDIENCE



Though we mail to 150 zip codes nationwide, the vast majority are in St. Louis, MO.



2,500+ E-mails



Posted on our website with clickable links to YOUR website.

For more information contact **Beth Kodner**, Director of Development & Membership at bkodner@sestl.org or (314) 692-5306.



**TENNIS AND
SWIM CLUB**



Named 2022 USTA St. Louis Member Organization of the Year

Forest Lake Tennis and Swim Club features 8 climate-controlled indoor tennis courts (open year-round), 5 outdoor tennis courts, 10 outdoor pickleball courts, and an outdoor swimming pool. Memberships, clinics, teams, leagues, & more are available.

Visit us at 1012 N. Woods Mill Road in Chesterfield
or online at forestlaketennisclub.com

CLERGY

RABBIS

James M. Bennett
Andrea M. Goldstein, DMin
Rachel K. Bearman

CANTOR

Seth P. Warner

RABBI EDUCATOR

Lori Levine

RABBI EMERITUS

Jeffrey B. Stiffman, PhD

STAFF

EXECUTIVE DIRECTOR

Craig Neuman

DIRECTOR OF JEWISH LIFE & LEARNING

Debbie Bram

DIRECTOR OF FAMILY ENGAGEMENT & MEMBERSHIP

Emily Cohen

DIRECTOR OF OPERATIONS

Robert Colton

DIRECTOR OF YOUTH ENGAGEMENT

Helena Cooper

DIRECTOR OF MUSIC ENGAGEMENT

Lucy Greenbaum

DIRECTOR OF CAMP EMETH

Laura Horton

DIRECTOR OF SHIRLEE GREEN PRESCHOOL

Brandi Kanoya

DIRECTOR OF DEVELOPMENT & MEMBERSHIP

Beth Kodner

DIRECTOR OF COMMUNICATIONS

Hannah Michelson

MAIN OFFICE ADMINISTRATORS

Tammy Beaird
Valerie Cundy
Stacy Jespersen
Maggie Jines
Jana McGinty

SCHOOL ADMINISTRATORS

Kayla Adams
Jessy Burnett
Marci Diamond
Emily Throgmorton

Time Sensitive Material

Non-Profit
Organization
Us Postage
PAID
St. Louis, MO
Permit #5844

BOARD OFFICERS

PRESIDENT

Dana DeBlasi

FIRST VICE PRESIDENT

Mark Gubernik

VICE PRESIDENTS

Betsy Cytron
Jennifer Schwesig
Michele Siler
Lisa Suffian
Evan Waldman

SECRETARY

Kathy Wiesman

TREASURER

Natalie Kalmar

ASSISTANT TREASURER

Mike Vredenburgh

IMMEDIATE PAST

PRESIDENT

Bill Remis

The Bulletin is published ten times per year by Congregation Shaare Emeth. For more information, please call the Temple office at 314.569.0010. For the most up-to-date information, make sure you're receiving ShaareMail - our weekly e-newsletter. Sign up on our website at sestl.org or text SHAAREMAIL to 22828.